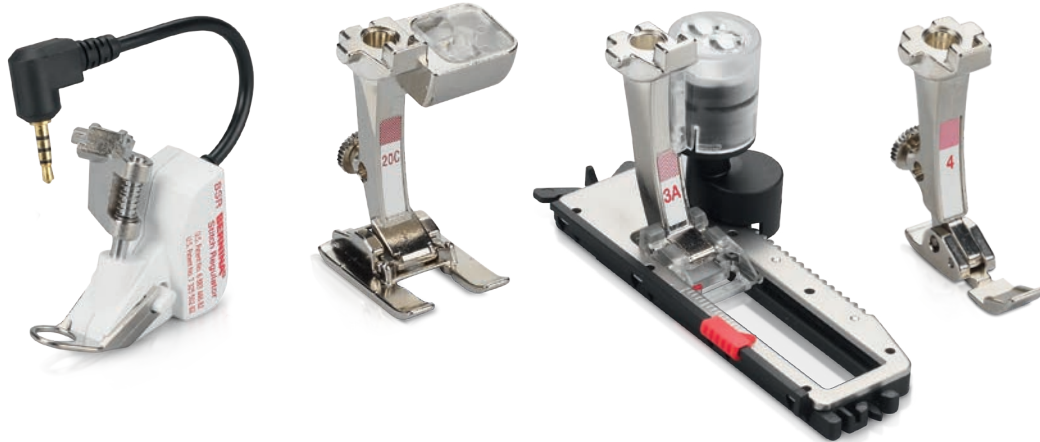


BERNINA ACCESSORIES

BERNINA ACCESSORIES AT A GLANCE



made to create **BERNINA**

Category A	1	910	1001	1020	1091	2	1630
		930	1004	1021	1120		
		931	1005	1030	1130		
		932	1006	1031	1230		
		933	1008	1050	1240		
		940	1010	1070	1241		
		950	1011	1080	1260		
		1000	1015	1090	1530		



Category B	1	125	230	2	130	3	165	5	B 530
		125 S	230 PE		140		170		B 550 QE
		135	240		150				
		135 S	B 325		153		4		430
		145	B 330		153 QE				440 QE
		145 S	B 335		155				B 555
		210	B 350 PE		160				B 570 QE
		B 215	B 380		163				630
		220							



Category C	1	180	3	435
		185		450
	2	200		B 560
		730		B 580
		640		



Category D	1	B 710
	2	B 750 QE B 780



Category E	7 Series	5 Series	4 Series		
Ea¹	B 700 E	Eb¹	B 500 E	Ec¹	B 435
Ea²	B 720 B 735	Eb²	B 535	Ec²	B 475 QE B 485
Ea³	B 740	Eb³	B 540	Ec³	B 480
Ea⁴	B 770 QE B 770 QE PLUS B 790 B 790 PLUS	Eb⁴	B 570 QE B 590		



Category F	1	B 820 QE
	2	B 830
		B 880 B 880 PLUS



Chapter 1

Presser Feet for Sewing Machines

General sewing		Non-Stick Open Embroidery Foot #56	21
Finger Guard #99	10	Gathering Foot #16	22
Zigzag Foot #0	10	Ruffler #86	22
Zigzag Foot with Non-Stick Sole #52/52C/52D	10	Tailor Tack Foot #7	22
Reverse Pattern Foot #1/1C/1D	11	Cordonnet Foot #11	23
Reverse Pattern Foot with Clear Sole #34/34C/34D	11	Braiding Foot #21	23
Walking Foot #50 with Three Alternative Soles and Seam Guide	11	Cording Foot #22/25	23
Roller Foot #51	12	Pintuck Foot #30/31/32/33	24
Straight Stitch Foot with Non-Stick Sole #53	12	Pintuck and Decorative Stitch Foot with Clear Sole #46C	24
		Pintuck Attachment	24
		Spanish Hemstitch Attachment #47	25
Buttons and Buttonholes		Piping Foot #38	25
Buttonhole Foot #3/3C	13	Embroidery Foot with Clear Sole #39/39C	25
Buttonhole Foot with Slide #3A/3B/3C	13	Sideways-motion Foot #40/40C	26
Button Sew-On Foot #18	13	Free-motion Couching Foot #43	26
		Leather Roller Foot #55	26
Elastic/Stretch Materials		Double-Cord Foot #59C/60C	27
Overlock Foot #2/2A	14	Embroidery Foot #15	27
Bulky Overlock Foot #12/12C	14	Drop-shaped Embroidery Foot #26	27
		Clear Appliqué Foot #23	28
Zippers		Patchwork	
Zipper Foot #4/4D	15	Patchwork Foot #37/37D	29
Zipper Foot with Guide #14/14D	15	Patchwork Foot with Guide #57/57D	29
Non-Stick Zipper Foot with Guide #54	15	Patchwork Foot #97/97D	29
Invisible Zipper Foot #35	16		
		Quilting	
Hems and Topstitching		Darning Foot #9	30
Blindstitch Foot #5	17	Freehand Embroidery Foot #24	30
Jeans Foot #8/8D	17	Quilting Foot #29/29C	30
Edgestitch Foot #10/10C/10D	17	BERNINA Stitch Regulator (BSR) #42	31
Straight Stitch Hemmer #62/64	18	Echo-Quilting and CutWork Foot #44C	31
Zigzag Hemmer #61/63/66	18	Adjustable Ruler Foot #72/72S	31
Roll and Shell Hemmer #68/69	18	Adjustable Stippling Foot #73	32
Binder Attachment for Pre-folded Bias Tape #87	19	Adjustable Gliding Cup Foot #74	32
Binder Attachment for Unfolded Bias Tape #88	19	Echo-Quilting Clips	32
Binder Foot #95/95C	19	Couching Inserts	33
Lap Seam Foot #70/71	20		
		Presser Foot Sets	
Decorative Sewing		Presser Foot Set	34
Embroidery Foot #6	21	Presser Foot Set D	34
Open Embroidery Foot #20/20C/20D	21		

Chapter 2

Accessories for Sewing Machines

Accessories for Sewing Machines		
Adapter Shank #75/77	36	Free Hand System (FHS)
Snap On Shank #78	36	Free-Hand System (FHS) Retrofit Kit
Patchwork Seam Guide	36	Sewing Light
BERNINA Stitch Plates	37	Hosiery Darning Hoop
Straight and CutWork Stitch Plate	37	Guide Eyelet for Metallic and Silk Thread
9-mm Stitch Plate with 5.5-mm Stitch Hole	37	Thread-lubrication Unit
5.5-mm PunchWork Stitch Plate	38	Sewing Machine Oil
PunchWork Stitch Plate	38	Magnifying Lens Set
CB Hook Bobbins and Bobbin Cases	38	Mounting Bracket for Magnifying Lens and PunchWork Tool
Rotary Hook Bobbins and Bobbin Cases	39	PunchWork Tool for CB Hook
B9/BERNINA Hook Bobbins and Bobbin Cases	39	PunchWork Tool for Rotary, B9 and BERNINA Hook
Circular Embroidery Attachment #83	39	Felting Needles
Eyelet Embroidery Attachment #82 with Foot #92	40	USB Stick
Presser Foot for Eyelet Embroidery #92	40	Multiple-spool Holder
Adjustable Guide	40	Multiple-spool Holder Extension
Right and Left Seam Guide	41	BERNINA Accessory Box
Seam Guide with Scale	41	Touchscreen Pen
Fabric-feeding Aid for Sewing Buttonholes	41	Carrying Bags for Sewing Machines and Embroidery Modules
Buttonhole Leveler	42	Carrying Case
Buttonhole Cutter with Wooden Block	42	Accessory Bag
Slide-on Table	43	Accessory Case
Seam Guide for Slide-on Table	43	L Trolley System
Plexiglass Slide-on Table for Quilting	44	XL Trolley System
Ruler Kit	44	Needle Assortment
		BERNINA Flat-shank Needles

Chapter 3

Accessories for Embroidery Machines

Accessories for Embroidery Machines			
Embroidery Modules	56	Midi Embroidery Hoop	58
Plexiglass Slide-on Table for Embroidery Module	56	Maxi Embroidery Hoop	58
Small Embroidery Hoop	56	Jumbo Embroidery Hoop	59
Medium Embroidery Hoop	57	"Hoop ,n' Buddyz" Hoop Insert	59
Large Embroidery Hoop	57	Freearm Embroidery Adapter for Medium and Oval Hoops	59
Large Oval Embroidery Hoop	57	BERNINA Embroidery Design Studio	60
Mega Embroidery Hoop	58	BERNINA CutWork Tool	60
		BERNINA CutWork Spare Parts	60

Chapter 4

Software

Software		BERNINA Toolbox	63
BERNINA Embroidery Software 9	62	Overview	63

Chapter 5

Accessories for Overlockers/Sergers

General sewing		Decorative Threads Guide	74
Standard Foot Overlock	68	Decorative Thread Spool Pin	74
Overlock/Combostitch Foot	68		
Clear Overlock/Combostitch Foot #L27/C27	68	Other accessories	
Chainstitch Foot	69	Right and Left Seam Guide	75
Cover-/Chainstitch Foot	69	Slide-on Table	75
		Freearm Cover	75
Hems and Topstitching		Cut-offs Bin	76
Coverstitch/Compensating Foot	70	BERNINA Tweezers	76
Elasticator Foot	70	Needle Threader/Inserter	76
Blindstitch Foot	70	Threading Wire	77
Double Fold Binder Attachment #C21	71	Brush/Needle Inserter	77
Single Fold Binder Attachment #C22	71	Screwdriver	77
Hem Guide	71	Spool Stabilizer/Spool Stabilizer	78
		Accessories Holder	78
Decorative Sewing		CS-Lock Tool	78
Multi-purpose Foot with Guide	72	Threading Kit Overlocker	79
Beading and Sequin Foot #L15/C15	72	Overlocker Oil	79
Piping Foot #L16 S/L16 L/C16 S/C16 L	72	Touchscreen Pen	79
Cording Foot	73	Accessories Box	80
Gathering Foot	73	Accessories Box/Accessories Box Extension	80
Gathering Attachment	73	Carrying Case for Overlockers/Sergers	80
		Trolley for Overlockers	81

Information on the BERNINA Accessories Catalog

Main categories

In the machine overview on the left-hand side, the BERNINA sewing and embroidery machines are listed and divided into the main categories A, B, C, D, E and F. These categories indicate which of the accessories are compatible with which machine models.

For space reasons, the special models and the models in category A are not listed in full.

Your BERNINA dealer will be happy to help you choose your accessories.

Numerical listing of presser feet

In addition to the machine overview, all BERNINA presser feet and snap-on soles are categorized numerically.

This enables you to find the required presser foot quickly based on the corresponding foot number.

Example

1. Find your model in the machine overview and note the category.

2. Find the required accessory in the presser foot list or in the table of contents, and check compatibility based on category.


7er Serie

Ea¹ B 700 E


Ea² B 720
B 735

Ea³ B 740

Ea⁴ B 770 QE
B 770 QE PLUS
B 790
B 790 PLUS



My BERNINA B 735 is in the category Ea².



50	008 968 73 00	A							
50	008 969 73 00		B	C	D	Ea ²⁻⁴	Eb ²⁻⁴	Ec	F
	032 913 71 00*	A	B	C	D	Ea ²⁻⁴	Eb ²⁻⁴	Ec	F

Walking Foot #50 is compatible with the B 735.

PRESSER FEET FOR SEWING MACHINES



Presser Feet Overview

Number	Name	Page	Number	Name	Page
#0	Zigzag Foot	10	#53	Straight Stitch Foot with Non-Stick Sole	12
#1/1C/1D	Reverse Pattern Foot	11	#54	Non-Stick Zipper Foot with Guide	15
#2/2A	Overlock Foot	14	#55	Leather Roller Foot	26
#3/3C	Buttonhole Foot	13	#56	Non-Stick Open Embroidery Foot	21
#3A/3B/3C	Buttonhole Foot with Slide	13	#57/57D	Patchwork Foot with Guide	29
#4/4D	Zipper Foot	15	#59C	Double-Cord Foot	27
#5	Blindstitch Foot	17	#60C	Double-Cord Foot	27
#6	Embroidery Foot	21	#61	Zigzag Hemmer	18
#7	Tailor Tack Foot	22	#62	Straight Stitch Hemmer	18
#8/8D	Jeans Foot	17	#63	Zigzag Hemmer	18
#9	Darning Foot	30	#64	Straight Stitch Hemmer	18
#10/10C/10D	Edgestitch Foot	17	#66	Zigzag Hemmer	18
#11	Cordonnet Foot	23	#68	Roll and Shell Hemmer	18
#12/12C	Bulky Overlock Foot	14	#69	Roll and Shell Hemmer	18
#14/14D	Zipper Foot with Guide	15	#70	Lap Seam Foot	20
#15	Embroidery Foot	27	#71	Lap Seam Foot	20
#16	Gathering Foot	22	#72/72S	Adjustable Ruler Foot	31
#18	Button Sew-On Foot	13	#73	Adjustable Stippling Foot	32
#20/20C/20D	Open Embroidery Foot	21	#74	Adjustable Gliding Cup Foot	32
#21	Braiding Foot	23	#75	Adapter Shank	36
#22	Cording Foot	23	#77	Adapter Shank	36
#23	Clear Appliqué Foot	28	#78	Snap On Shank	36
#24	Freehand Embroidery Foot	30	#82	Eyelet Embroidery Attachment #82 with Foot #92	40
#25	Cording Foot	23	#83	Circular Embroidery Attachment	39
#26	Drop-shaped Embroidery Foot	27	#86	Ruffler	22
#29/29C	Quilting Foot	30	#87	Binder Attachment for Pre-folded Bias Tape	19
#30	Pintuck Foot	24	#88	Binder Attachment for Unfolded Bias Tape	19
#31	Pintuck Foot	24	#92	Presser Foot for Eyelet Embroidery	40
#32	Pintuck Foot	24	#95/95C	Binder Foot	19
#33	Pintuck Foot	24	#97/97D	Patchwork Foot	29
#34/34C/34D	Reverse Pattern Foot with Clear Sole	11	#99	Finger Guard	10
#35	Invisible Zipper Foot	16			
#37/37D	Patchwork Foot	29			
#38	Piping Foot	25			
#39/39C	Embroidery Foot with Clear Sole	25			
#40/40C	Sideways-motion Foot	26			
#42	BERNINA Stitch Regulator (BSR)	31			
#43	Free-motion Couching Foot	26			
#44C	Echo-Quilting and CutWork Foot	31			
#46C	Pintuck and Decorative Stitch Foot with Clear Sole	24			
#47	Spanish Hemstitch Attachment	25			
#50	Walking Foot #50 with Three Alternative Soles and Seam Guide	11			
#51	Roller Foot	12			
#52/52C/52D	Zigzag Foot with Non-Stick Sole	10			

Snap-on Soles		
Number	Name	Page
#1	Reverse Pattern Sole	11
#2	Overlock Sole	14
#3	Buttonhole Sole	13
#4	Zipper Sole	15
#5	Blindstitch Sole	17
#8	Jeans-Foot Sole	17
#20	Open Embroidery Sole	21
#37	Patchwork Foot Sole	29

Information on BERNINA presser feet

BERNINA presser feet stand for precision and sturdiness. They are easy to change and BERNINA has a suitable presser foot for every application. The sewing feet are divided into two types with different shank openings:



For all models in category A of the accessories catalog, presser feet with a 2-point shank opening are used.



For all remaining models in categories B to F of the accessories catalog, presser feet with a closed shank opening are used.

**Presser feet with a closed shank opening are divided into various types:
For example, Reverse Pattern Foot #1/1C/1D for attractive decorative sewing**

1



- These presser feet are identified by foot numbers
- For BERNINA sewing and embroidery machines with a maximum stitch width of 5.5 mm

1C



- The letter "C" stands for "coded" presser foot, and refers to the sensor that specifies the stitch width to the sewing machine
- For BERNINA sewing and embroidery machines with a maximum stitch width of 9 mm
- The soles are longer and wider than on the 5.5-mm presser foot

1D



- The letter "D" stands for "Dual Feed". "D" presser feet are used with the BERNINA Dual Feed system. The sole therefore has a recess at the back for the Dual Feed
- For BERNINA sewing and embroidery machines with a maximum stitch width of 9 mm
- The sole is reinforced with 2 shanks

Additional distinguishing features of buttonhole feet

3A



- The letter "A" stands for automatic sewing of the 5.5-mm buttonhole
- For BERNINA sewing and embroidery machines with a maximum stitch width of 5.5 and 9 mm
- Variable buttonhole length up to a maximum of 30 mm
- The machine measures the length of the buttonhole (mm) via the sensor and completes it automatically

3B



- The letter "B" stands for semi-automatic sewing of the buttonhole
- For BERNINA sewing and embroidery machines with a maximum stitch width of 5.5 and 9 mm
- Variable buttonhole length up to a maximum of 30 mm
- The machine measures the length of the buttonhole (number of stitches) and completes it in stages

Comprehensive information including videos and useful application tips can be found on our website at www.bernina.com.

General sewing

Finger Guard #99



The finger guard is a simple safety device. It can be mounted on the shaft of most presser feet.



<https://www.bernina.com/finger-guard>

99	032 711 70 00	B	C	D	Ea ²⁺⁴	Eb ²⁺⁴	Ec	F
----	---------------	---	---	---	-------------------	-------------------	----	---

Zigzag Foot #0



This presser foot is suitable for all utility and decorative stitches with a maximum stitch width of 5.5 mm. It can also be used for scallops, gathering work, shell hems, etc.



<https://www.bernina.com/foot-0>

0	002 598 72 00	A						
0	008 444 73 00	B	C	D	Ea ²⁺⁴	Eb ²⁺⁴	Ec	F

Zigzag Foot with Non-Stick Sole #52/52C/52D



The sole of this foot has a non-stick coating to ensure that it slides smoothly over materials that are difficult to work with, such as plastics, vinyl, leather, and other similar materials.



<https://www.bernina.com/foot-52>

52	002 586 72 00	A						
52	003 076 71 00*	A2						9 mm non-stick sole
52	008 477 74 00	B	C	D	Ea ²⁺⁴	Eb ²⁺⁴	Ec	F
52C	008 881 75 00	C	D		Ea ³⁺⁴	Eb ³⁺⁴	Ec ³	F
52D	032 965 72 00	D			Ea ³⁺⁴	Eb ⁴		F

* While stocks last

General sewing

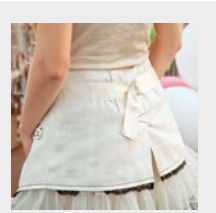
Reverse Pattern Foot #1/1C/1D



With the reverse pattern foot you will succeed sewing various practical and decorative stitches as well as sewing hems. The indentation in front of and behind the needle hole allows forward and reverse stitching and guarantees excellent fabric feed.

1	002 576 72 00	A							
1	002 781 70 00*	A2							
1	032 707 71 00	A	B1					Ec ¹⁺² ■	Snap-on
1	008 445 74 00		B	C	D	Ea ²⁻⁴	Eb ²⁻⁴	Ec	F
1C	033 202 72 00			C	D	Ea ³⁺⁴	Eb ³⁺⁴	Ec ³	F
1D	033 220 72 00				D	Ea ³⁺⁴	Eb ⁴		F

* While stocks last
 ■ Ec²: B 475 QE



<https://www.bernina.com/foot-1>

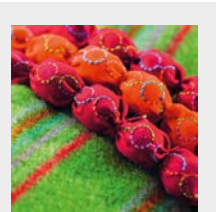
Reverse Pattern Foot with Clear Sole #34/34C/34D



The clear sole of this reverse pattern foot ensures a good view of the stitching and needle area. The red markings on the top of the foot allow especially accurate and careful sewing.

34	030 972 71 00	A							
34C	030 974 70 00*	A2							
34	030 770 72 00		B	C	D	Ea ²⁻⁴	Eb ²⁻⁴	Ec	F
34C	030 769 73 00			C	D	Ea ³⁺⁴	Eb ³⁺⁴	Ec ³	F
34D	032 961 72 00				D	Ea ³⁺⁴	Eb ⁴		F

* While stocks last



<https://www.bernina.com/foot-34>

Walking Foot #50 with Three Alternative Soles and Seam Guide

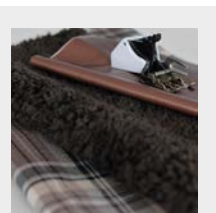


The walking foot helps to achieve even fabric feed. It is especially suitable for machine-quilting straight lines and for accurately joining materials that tend to stick and move around, or which have a lot of stretch. Its two seam guides also help you sew with precision.

50	008 968 73 00	A							
50	008 969 73 00		B	C	D	Ea ²⁻⁴	Eb ²⁻⁴	Ec	F
	032 913 71 00*	A	B	C	D	Ea ²⁻⁴	Eb ²⁻⁴	Ec	F

Separate sole for edge-stitching and in-the-ditch stitching

* While stocks last



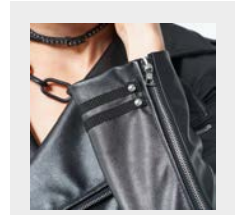
<https://www.bernina.com/foot-50>

General sewing

Roller Foot #51



The three rollers on the bottom of this foot allow it to glide effortlessly over materials that tend to stick, such as leather, vinyl and plastic.



<https://www.bernina.com/foot-51>

51	002 953 72 00	A							
51	008 476 73 00		B	C	D	Ea ²⁺⁴	Eb ²⁺⁴	Ec	F

Straight Stitch Foot with Non-Stick Sole #53



In combination with the straight-stitch plate, this presser foot is ideal for all types of straight-stitching and for narrow seams. Thanks to the non-stick coating on the sole, it passes easily over fabrics that tend to stick during sewing, such as leather and plastics. The two different toe widths serve as guide lines for seam allowances of 3 and 6 mm.



<https://www.bernina.com/foot-53>

53	002 962 72 00	A							
53	008 478 74 00		B	C	D	Ea ²⁺⁴	Eb ²⁺⁴	Ec	F

Buttons and Buttonholes

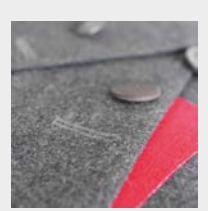
Buttonhole Foot #3/3C



This presser foot lets you sew corded or plain buttonholes in any desired length. It can also be used for gathering using thread or elastic thread (smocking). Ideal for creating the perfect buttonhole together with the buttonhole cutter and button sew-on foot.

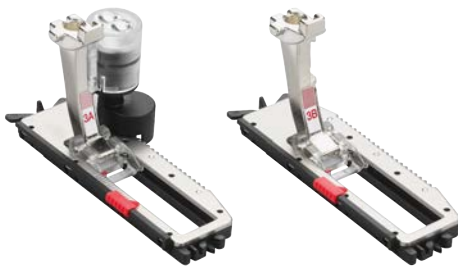
3	002 578 72 00	A								
3	002 767 70 00*	A2								
3	032 714 71 00	A	B1					Ec ¹⁺² ■		Snap-on
3	008 447 74 00		B	C	D	Ea ²⁻⁴	Eb ²⁻⁴	Ec	F	
3C	033 204 72 00			C	D	Ea ³⁺⁴	Eb ³⁺⁴	Ec ³	F	

* While stocks last
 ■ Ec: B 475 QE



<https://www.bernina.com/foot-3>

Buttonhole Foot with Slide #3A/3B/3C



For sewing automatic buttonholes with or without cording. This allows you to produce any number of buttonholes of the exact same length. Use together with the fabric-feeding aid or the buttonhole leveler as well as the buttonhole cutter and button sew-on foot to create perfect buttonholes with consummate ease.

3C	031 250 70 04	A								
3A	031 250 71 01		B [■]	C	D	Ea ²⁻⁴	Eb ²⁻⁴	Ec	F	with sensor
3B	031 332 71 00		B1 [□]							

■ B1: 135, 135 S, 145, 145 S, 230, 230 PE, 240, B 325, B 330, B 335, B 350 PE, B 380
 □ B1: 125, 125 S, 210, 215, 220



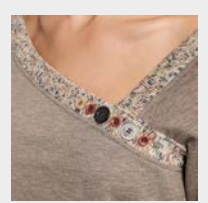
<https://www.bernina.com/foot-3A>

Button Sew-On Foot #18



This presser foot helps you sew on buttons and hooks. The rubberized sole holds the button firmly in the right place while it is being sewn on. The height of the neck can be flexibly adjusted via the middle toe, depending on the fabric thickness.

18	002 959 72 00	A								
18	008 461 74 00		B	C	D	Ea ²⁻⁴	Eb ²⁻⁴	Ec	F	
	032 224 50 00									Sole pad



<https://www.bernina.com/foot-18>

Elastic/Stretch Materials

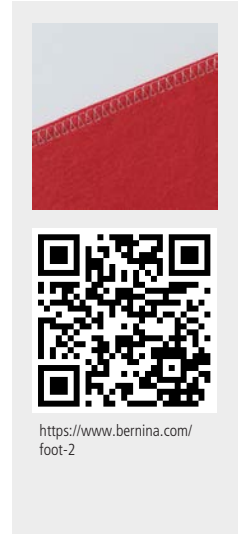
Overlock Foot #2/2A



The overlock foot is particularly suitable for making overlock seams and neatening edges in stretchy materials and woven fabrics. The edges of the fabric do not curl, resulting in a flat, elastic seam.

2	002 577 72 00	A								
2A	001 694 70 01*	A2								
2	032 716 71 00	A	B1					Ec ^{1,2} ■		Snap-on
2	008 446 74 00		B	C	D	Ea ²⁺⁴	Eb ²⁺⁴	Ec	F	
2A	033 330 72 01			C	D	Ea ³⁺⁴	Eb ³⁺⁴	Ec ³	F	
	315 579 032+									Thread Guiding Plate

* While stocks last
 ■ Ec³: B 475 QE

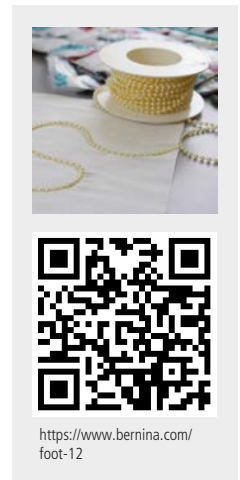


Bulky Overlock Foot #12/12C



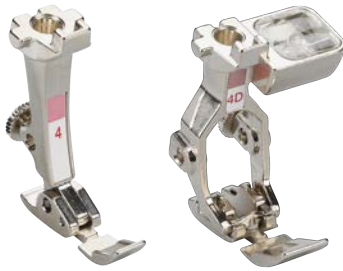
For seaming knits and couching thick cords, strings of beads and sequins, and for making and sewing in piping in a single operation. Boasting a maximum stitch width of 9 mm, the #12C foot has a guide hole for sewing over narrow couching cords such as wool, yarn and leather strips.

12	002 951 72 00	A								
12	008 457 74 00		B	C	D	Ea ²⁺⁴	Eb ²⁺⁴	Ec	F	
12C	008 878 75 00			C	D	Ea ³⁺⁴	Eb ³⁺⁴	Ec ³	F	



Zippers

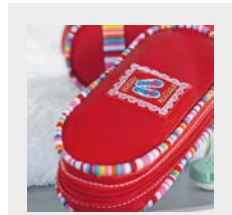
Zipper Foot #4/4D



The zipper foot lets you sew in zips cleanly and accurately in no time flat. The narrow sole is positioned close to the zip teeth in order to sew the zip tape right next to the edge.

4	002 579 73 00	A								
4	032 712 71 00	A	B1					Ec ¹⁺² ■		Snap-on
4	008 448 74 00		B	C	D	Ea ²⁺⁴	Eb ²⁺⁴	Ec	F	
4D	033 221 72 00				D	Ea ³⁺⁴	Eb ⁴		F	

■ Ec: B 475 QE



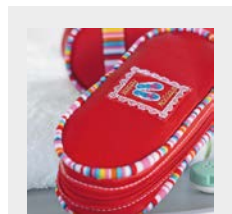
<https://www.bernina.com/foot-4>

Zipper Foot with Guide #14/14D



The guide makes it much easier to insert zips straight and to topstitch edges.

14	006 388 72 00	A								
14D	032 964 72 00				D	Ea ³⁺⁴	Eb ⁴		F	



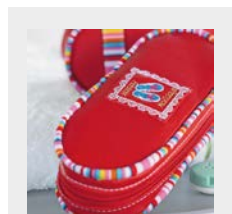
<https://www.bernina.com/foot-14>

Non-Stick Zipper Foot with Guide #54



The special non-stick coating on the sole makes it easy to sew zips into fabrics that tend to stick, such as leather and plastic.

54	002 964 73 00	A								
54	008 479 75 00		B	C	D	Ea ²⁺⁴	Eb ²⁺⁴	Ec	F	



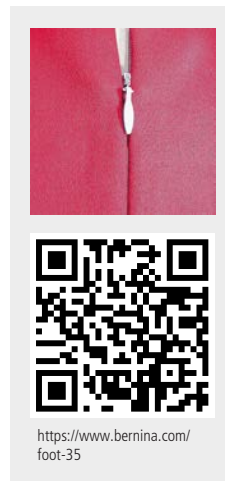
<https://www.bernina.com/foot-54>

Zippers

Invisible Zipper Foot #35



Invisible zips look particularly elegant, especially in garments, home decorations and accessories. This foot allows the insertion of a zip such that it is virtually invisible.



35	030 820 71 00	A							
35	030 653 72 00		B	C	D	Ea ²⁴	Eb ²⁴	Ec	F

Hems and Topstitching

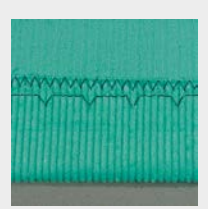
Blindstitch Foot #5



The blindstitch seam is ideal for garments that are meant to radiate elegance and quality. The needle pierces the fabric so little that the stitch is barely visible on the front. Blindstitching can also be used as a decorative stitch on the front by changing the stitch length/width.

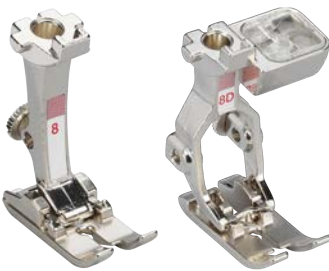
5	002 580 73 00	A							
5	032 717 71 00	A	B1					Ec ¹⁺² ■	Snap-on
5	008 449 73 00		B	C	D	Ea ²⁻⁴	Eb ²⁻⁴	Ec	F

■ Ec²: B 475 QE



<https://www.bernina.com/foot-5>

Jeans Foot #8/8D



Used together with the straight-stitch needle plate, the jeans foot is ideal for straight-stitching over thick seams and on multilayer or densely woven materials such as denim, canvas or travel bags.

8	002 583 72 00	A							
8	036 629 70 00*	A	B1					Ec ¹⁺² ■	Snap-on
8	008 453 73 00		B	C	D	Ea ²⁻⁴	Eb ²⁻⁴	Ec	F
8D	032 962 71 00				D	Ea ³⁺⁴	Eb ⁴		F

* While stocks last
 ■ Ec²: B 475 QE



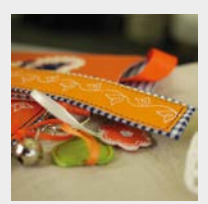
<https://www.bernina.com/foot-8>

Edgestitch Foot #10/10C/10D



This presser foot with guide is excellent for topstitching edges, hems and pleats. It is also ideal for sewing on lace or ribbon and for reinforcing edges. The guide lets you sew perfect seams and hems running parallel to the edge.

10	002 585 72 00	A							
10	008 455 74 00		B	C	D	Ea ²⁻⁴	Eb ²⁻⁴	Ec	F
10C	008 877 75 00			C	D	Ea ³⁺⁴	Eb ³⁺⁴	Ec ³	F
10D	032 960 72 00				D	Ea ³⁺⁴	Eb ⁴		F



<https://www.bernina.com/foot-10>

Hems and Topstitching

Straight Stitch Hemmer #62/64



Used in combination with the straight stitch plate, the straight stitch hemmer creates a hem with particularly beautiful stitching. The fabric is folded over twice in a single operation as it is sewn with a straight-stitch. Feet #62 and #64 are used for hems with a width of 2 and 4 mm respectively.

62	008 482 73 00	B	C	D	Ea ²⁻⁴	Eb ²⁻⁴	Ec	F	2 mm
64	002 955 73 00	A							4 mm
64	008 484 73 00	B	C	D	Ea ²⁻⁴	Eb ²⁻⁴	Ec	F	4 mm



<https://www.bernina.com/foot-62>

Zigzag Hemmer #61/63/66



The zigzag hemmer sews beautifully decorated non-fraying hems in a single operation. The fabric is folded over twice and sewn down with a zigzag or decorative stitch. Feet #61 and #63 are suitable for fine fabrics. Foot #66 is ideal for medium-weight fabrics.

61	002 956 72 00	A							2 mm
61	008 481 73 00	B	C	D	Ea ²⁻⁴	Eb ²⁻⁴	Ec	F	2 mm
63	002 961 73 00	A							3 mm
63	008 483 73 00	B	C	D	Ea ²⁻⁴	Eb ²⁻⁴	Ec	F	3 mm
66	002 972 71 00	A							6 mm
66	008 485 73 00	B	C	D	Ea ²⁻⁴	Eb ²⁻⁴	Ec	F	6 mm



<https://www.bernina.com/foot-61>

Roll and Shell Hemmer #68/69



This presser foot is deal for hemming soft fabrics such as knitwear. The fabric is folded over twice in a single operation as it is sewn with an overlock stitch. This creates a narrow, slightly three-dimensional hem which does not fray. Feet #68 and #69 are used for hems 2 and 4 mm wide respectively.

68	002 958 71 00	A							2 mm
68	008 486 73 00	B	C	D	Ea ²⁻⁴	Eb ²⁻⁴	Ec	F	2 mm
69	001 129 72 00	A							4 mm
69	008 487 73 00	B	C	D	Ea ²⁻⁴	Eb ²⁻⁴	Ec	F	4 mm



<https://www.bernina.com/foot-68>

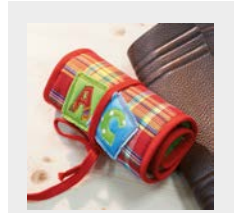
Hems and Topstitching

Binder Attachment for Pre-folded Bias Tape #87



This binder attachment is used for binding edges with pre-folded bias tape in widths of 13, 20 or 25 mm. It enables perfect corners and beautiful curves to be created using utility or decorative stitches. The binder attachment is used in combination with Binder Foot #95/95C.

87	033 505 72 02	A	B	C	D	Ea ²⁻⁴	Eb ²⁻⁴	Ec	F	13 mm
87	033 505 72 00	A	B	C	D	Ea ²⁻⁴	Eb ²⁻⁴	Ec	F	20 mm
87	033 505 72 01	A	B	C	D	Ea ²⁻⁴	Eb ²⁻⁴	Ec	F	25 mm



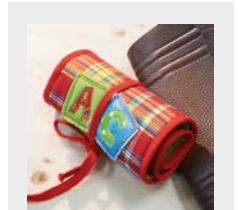
<https://www.bernina.com/foot-87>

Binder Attachment for Unfolded Bias Tape #88



This binder attachment creates perfect edge finishes using unfolded bias tape in widths of 28, 32 or 38 mm. For the perfect look, the bias tape can also be self-made. The binder attachment is used in combination with Binder Foot #95/95C.

88	033 505 72 03	A	B	C	D	Ea ²⁻⁴	Eb ²⁻⁴	Ec	F	28 mm
88	033 505 72 04	A	B	C	D	Ea ²⁻⁴	Eb ²⁻⁴	Ec	F	32 mm
88	033 505 72 05	A	B	C	D	Ea ²⁻⁴	Eb ²⁻⁴	Ec	F	38 mm



<https://www.bernina.com/foot-88>

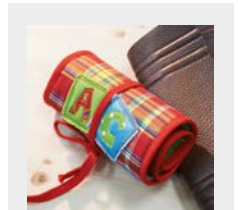
Binder Foot #95/95C



This presser foot was specially designed for use with binder attachments #87 and #88. The notch at the side allows closer access to the binder attachment, making the process easier.

95	033 554 72 10	A								
95	033 554 71 00		B	C	D	Ea ²⁻⁴	Eb ²⁻⁴	Ec	F	
95C	033 555 70 10*	A2								
95C	033 555 71 00			C	D	Ea ³⁺⁴	Eb ³⁺⁴	Ec ³	F	

* While stocks last



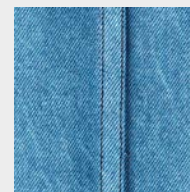
<https://www.bernina.com/foot-95>

Hems and Topstitching

Lap Seam Foot #70/71



This foot enables precise lap seams to be produced. Since both seam allowances are enclosed and stitched securely in the hem seam, the foot is also suitable for sewing reversible clothing. Foot #70 is suitable for lap seams up to 3 mm wide, whilst foot #71 is suitable for lap seams up to 6 mm in width.



<https://www.bernina.com/foot-70>

70	008 488 73 00	B	C	D	Ea ²⁺⁴	Eb ²⁺⁴	Ec	F	4 mm
71	002 973 73 00	A							8 mm
71	008 489 73 00	B	C	D	Ea ²⁺⁴	Eb ²⁺⁴	Ec	F	8 mm

Decorative Sewing

Embroidery Foot #6



The ideal presser foot for buttonhole seams, appliqué and decorative stitches. Superb effects can be achieved by sewing over decorative yarns. The small hole in the center-front of the foot acts as a guide for a couching cord or elastic thread, but can also be used as a visual guide.



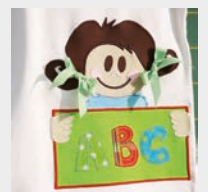
<https://www.bernina.com/foot-6>

6	002 581 73 00	A							
6	008 451 73 00		B	C	D	Ea ²⁻⁴	Eb ²⁻⁴	Ec	F

Open Embroidery Foot #20/20C/20D



This foot is used to create appliqué and embroidery designs and for sewing over lines and patterns. The open shape ensures a perfect view of the sewing area, making this foot ideal for sewing on ribbons and creating attractive appliqué patterns.



<https://www.bernina.com/foot-20>

20	002 588 72 00	A							
20	002 806 71 00*	A2							
20	036 630 70 00	A	B1					Ec ¹⁺² ■	Snap-on
20	008 462 74 00		B	C	D	Ea ²⁻⁴	Eb ²⁻⁴	Ec	F
20C	033 203 72 00				D	Ea ³⁺⁴	Eb ⁴	Ec ³	F
20D	033 151 72 00				D	Ea ³⁺⁴	Eb ⁴		F

* While stocks last
 ■ Ec²: B 475 QE

Non-Stick Open Embroidery Foot #56



The special non-stick coating on the sole makes it possible to appliqué and do all sorts of decorative embroidery on fabrics that tend to stick during sewing, such as leather, plastic and other similar materials.



<https://www.bernina.com/foot-56>

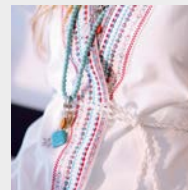
56	008 480 74 00		B	C	D	Ea ²⁻⁴	Eb ²⁻⁴	Ec	F
----	---------------	--	---	---	---	-------------------	-------------------	----	---

Decorative Sewing

Gathering Foot #16



Suitable for gathering individual fabric layers or for gathering and simultaneously sewing onto a flat piece of fabric. The thin or medium-weight fabric is fed in unevenly whilst being sewn, giving it its characteristic gathering.



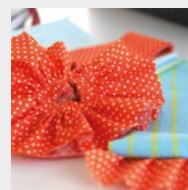
<https://www.bernina.com/foot-16>

16	002 596 72 00	A							narrow
16	008 460 73 00	B	C	D	Ea ²⁺⁴	Eb ²⁺⁴	Ec	F	narrow
16	008 879 73 00		C	D	Ea ³⁺⁴	Eb ³⁺⁴	Ec ³	F	wide

Ruffler #86



For creating ruffles or uniform pleats with ease. The pleat density and depth are set directly on the foot. Makes the gathering and uniform pleating of fabrics child's play.



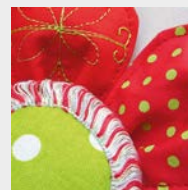
<https://www.bernina.com/foot-86>

86	008 386 75 00	B	C						
86	033 550 72 00			D	Ea ²⁺⁴	Eb ²⁺⁴	Ec	F	

Tailor Tack Foot #7



Especially suitable for marking seam lines and also for sewing elegant embellishments, imitation hemstitch (fagoting), fringes and 3D effects.



<https://www.bernina.com/foot-7>

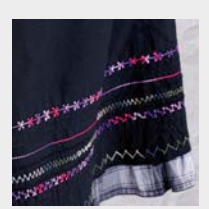
7	002 582 72 00	A							
7	008 452 74 00	B	C	D	Ea ²⁺⁴	Eb ²⁺⁴	Ec	F	

Decorative Sewing

Cordonnet Foot #11



This presser foot is ideally suited for sewing and topstitching with cordonnet as the upper thread and for sewing sashiko patterns and the like. The 2 mm deep groove on the underside of the foot ensures that the thicker upper thread is feed smoothly under the sole.



<https://www.bernina.com/foot-11>

11	002 952 71 00*	A							
11	008 456 73 00		B	C	D	Ea ²⁻⁴	Eb ²⁻⁴	Ec	F

* While stocks last

Braiding Foot #21



This foot lets you guide narrow ribbons and cords with precision whilst couching. The beveled cutout can accommodate cords and narrow ribbons up to 3 mm thick, which can be couched using a utility or decorative stitch.



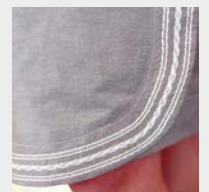
<https://www.bernina.com/foot-21>

21	002 595 72 00	A							
21	008 463 73 00		B	C	D	Ea ²⁻⁴	Eb ²⁻⁴	Ec	F

Cording Foot #22/25



The grooves allow several strands of side-by-side yarns or narrow ribbons to be couched simultaneously, held in place securely by the latch. This means that the yarns do not need guiding. Foot #22 is designed for three and foot #25 for five side-by-side yarns.



<https://www.bernina.com/foot-22>

22	008 465 74 00		B	C	D	Ea ²⁻⁴	Eb ²⁻⁴	Ec	F	with 3 grooves
25	008 468 74 00		B	C	D	Ea ²⁻⁴	Eb ²⁻⁴	Ec	F	with 5 grooves

Decorative Sewing

Pintuck Foot #30/31/32/33



Pintucks give texture to a fabric surface and are ideal for piping, trimmings, smocking, entredeux and fagoting.

Foot #30: For heavy fabrics such as denim or suit linen, with 4-mm twin needle

Foot #31: For medium-weight fabrics, with 3-mm twin needle

Foot #32: For fine-to-medium-weight fabrics, with 2-mm twin needle

Foot #33: For very fine and lightweight fabrics such as batiste, with 1.6-mm twin needle

30	002 589 72 00	A								with 3 grooves
30	008 470 73 00		B	C	D	Ea ²⁻⁴	Eb ²⁻⁴	Ec	F	with 3 grooves
31	002 590 72 00	A								with 5 grooves
31	008 471 73 00		B	C	D	Ea ²⁻⁴	Eb ²⁻⁴	Ec	F	with 5 grooves
32	002 591 72 00	A								with 7 grooves
32	008 472 73 00		B	C	D	Ea ²⁻⁴	Eb ²⁻⁴	Ec	F	with 7 grooves
33	002 592 71 00	A								with 9 grooves
33	008 473 73 00		B	C	D	Ea ²⁻⁴	Eb ²⁻⁴	Ec	F	with 9 grooves



<https://www.bernina.com/foot-30>

Pintuck and Decorative Stitch Foot with Clear Sole #46C



This foot is specially designed to facilitate the combination of decorative stitches with pintucks. After sewing the pintucks, the same foot can be used to sew beautiful decorative stitches in between the individual pintucks or to couch ribbons. The clear sole provides a good view of the sewing area.

46C	033 308 71 00	B	C	D	Ea ²⁻⁴	Eb ²⁻⁴	Ec	F	
-----	---------------	---	---	---	-------------------	-------------------	----	---	--



<https://www.bernina.com/foot-46>

Pintuck Attachment



The pintuck attachment facilitates the sewing of corded pintucks. Simply guide the filler cord through the channel of the attachment. When used in conjunction with the pintuck foot, the cord is automatically incorporated in the pintuck, creating a beautiful raised effect.

033 270 71 00	B	C	D	Ea ²⁻⁴	Eb ²⁻⁴	Ec	F	
---------------	---	---	---	-------------------	-------------------	----	---	--



<https://www.bernina.com/pintuck-attachment>

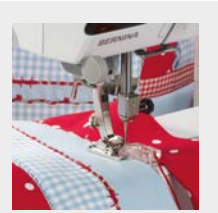
Decorative Sewing

Spanish Hemstitch Attachment #47



The spanish hemstitch attachment enables you to join fabric edges together with or without a cord and create edge finishes with cording. Use the foot #20 to guide 5.5-mm cords and the foot #20C foot to guide 9-mm cords.

47	033 809 73 00	B	C	D	Ea ²⁻⁴	Eb ²⁻⁴	Ec	F
----	---------------	---	---	---	-------------------	-------------------	----	---



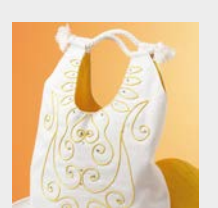
<https://www.bernina.com/Spanish-hemstitch-attachment>

Piping Foot #38



One side of the piping foot is higher than the other, allowing it to feed fabric layers of different thicknesses evenly. This foot is also suitable for applying thick ribbons, hook-and-loop tape, and thin cords, as well as for piping of narrow- to-medium width.

38	030 915 71 00	A						
38	031 021 72 00	B	C	D	Ea ²⁻⁴	Eb ²⁻⁴	Ec	F



<https://www.bernina.com/foot-38>

Embroidery Foot with Clear Sole #39/39C



This foot is especially suitable for decorative stitches, buttonhole seams, appliqués, couching perle yarn, and sewing off-the-edge scallops. It can also be used to create raised effects. The small hole in the center of the foot acts as a guide for couching a narrow cord. The clear sole provides a good view of the fabric.

39	031 482 71 00	A						
39C	032 860 70 00*	A2						
39	031 406 72 00	B	C	D	Ea ²⁻⁴	Eb ²⁻⁴	Ec	F
39C	032 171 73 00		C	D	Ea ³⁺⁴	Eb ³⁺⁴	Ec ³	F

* While stocks last



<https://www.bernina.com/foot-39>

Decorative Sewing

Sideways-motion Foot #40/40C



The perfect tool for sewing sideways-motion patterns, and for sewing utility and decorative stitches in different directions.

40 006 058 70 00* A2

40C	033 205 71 00	C1,2	D2 [■]	Ea [□]	F2
-----	---------------	------	-----------------	-----------------	----

* While stocks last
 ■ D2: B 780
 □ Ea4: B 790, B 790 PLUS



<https://www.bernina.com/foot-40>

Free-motion Couching Foot #43



This presser foot facilitates the sewing-on of appliqués, using cords, yarns, ribbons and braids with a diameter of 2 mm. All sorts of lines and shapes can be created by feeding the cord directly under the needle.

43 031 779 73 00 B C D E F

031 555 50 00	B [■]	C1	Eb	Ec	Thread Guide
---------------	----------------	----	----	----	--------------

033 080 50 00	B4 [□]	C2,3	D	Ea	F	Thread Guide
---------------	-----------------	------	---	----	---	--------------

■ B4: 430, 440, B 555, B 570 QE
 □ B4: 630



<https://www.bernina.com/foot-43>

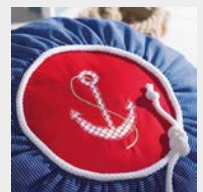
Leather Roller Foot #55



With its profiled roller, this presser foot is especially suitable for contour quilting and for sewing tight curves on e.g. leather, vinyl and plastic, as well as for quilting and sewing multiple layers of fabric. It can also be used to create jumbo piping.

55 031 304 71 01 A

55	031 304 71 00	B	C	D	Ea ²⁻⁴	Eb ²⁻⁴	Ec	F
----	---------------	---	---	---	-------------------	-------------------	----	---



<https://www.bernina.com/foot-55>

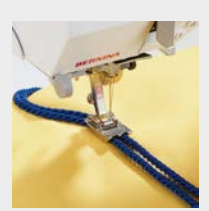
Decorative Sewing

Double-Cord Foot #59C/60C



For simultaneously sewing on two parallel cords with a diameter of 4-6 mm or 7-8 mm. The versatile double cord foot is also ideal for sewing on piping.

59C	032 370 72 00	B	C	D	Ea ²⁻⁴	Eb ²⁻⁴	Ec	F	4-6 mm
60C	032 370 72 01	B	C	D	Ea ²⁻⁴	Eb ²⁻⁴	Ec	F	7-8 mm



<https://www.bernina.com/foot-59C>

Embroidery Foot #15



This foot is ideally suited for appliqué work and free-motion quilting. Its slightly-upwards-curving shape makes it easier to sew on pile and bulky fabrics and to embroider over appliqué designs and densely embroidered motifs.

15	032 708 71 00	B	C	D	E	F
-----------	----------------------	---	---	---	---	---



<https://www.bernina.com/foot-15>

Drop-shaped Embroidery Foot #26



Used together with a straight-stitch plate, this embroidery foot is particularly suitable for tasks that use the embroidery module, as well as for darning fine fabrics. The drop-shaped needle opening and the shape of the presser-foot sole reduce damage to the upper thread, contributing to an attractive embroidery result.

26	031 597 71 00	B	C	D	E	F
-----------	----------------------	---	---	---	---	---



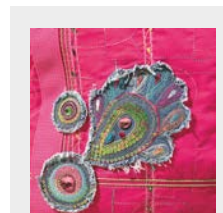
<https://www.bernina.com/foot-26>

Decorative Sewing

Clear Appliqué Foot #23



This presser foot is ideal for appliquéing narrow buttonhole seams of up to 2 mm. The specially shaped clear sole provides a perfect view of the sewing area and feeds through dense stitching without a problem, both with straight lines and curves. The notch at the front can also hold a couching thread or ribbon.



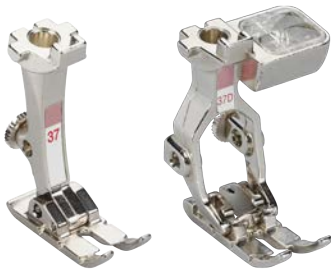
<https://www.bernina.com/foot-23>

23 002 960 73 00 A

23 008 466 73 00 B C D Ea²⁴ Eb²⁴ Ec F

Patchwork

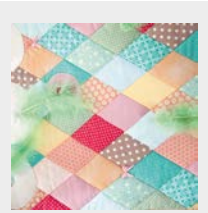
Patchwork Foot #37/37D



This foot is ideally suited to patchwork projects with seam allowances of 3 mm (1/8") or 6 mm (1/4"). The three notches on the side ensure precise guidance for inserting rectangular patchwork pieces.

37	001 127 72 00	A							
37	036 631 70 00	A	B1					Ec ¹⁺² ■	Snap-on
37	008 474 74 00		B	C	D	Ea ²⁺⁴	Eb ²⁺⁴	Ec	F
37D	033 152 72 00				D	Ea ³⁺⁴	Eb ⁴		F

■ Ec: B 475 QE



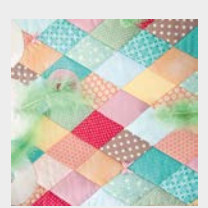
<https://www.bernina.com/foot-37>

Patchwork Foot with Guide #57/57D



Patchwork Foot #/57/57D differs from Patchwork Foot #37/37D in that it has an additional guide enabling perfectly straight lines to be sewn.

57	032 148 71 00	A							
57	031 577 72 00		B	C	D	Ea ²⁺⁴	Eb ²⁺⁴	Ec	F
57D	032 963 72 00				D	Ea ³⁺⁴	Eb ⁴		F



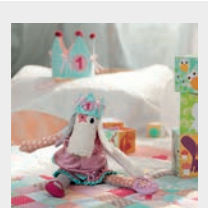
<https://www.bernina.com/foot-57>

Patchwork Foot #97/97D



This patchwork foot is ideal for creating beautiful quilts and other precision sewing work. The markings on the sole for seam allowances of 3 mm (1/8"), 6 mm (1/4") and 7.5 mm (3/10") ensure accurate guiding. The contact area of this foot is perfect for machines with a 9-mm stitch width, and enables careful guiding of the fabric and stitching when joining pieces of fabric together.

97	035 927 70 00		C	D	Ea ³⁺⁴	Eb ³⁺⁴	Ec ³		F
97D	035 928 71 00			D	Ea ³⁺⁴	Eb ⁴			F



<https://www.bernina.com/foot-97>

Quilting

Darning Foot #9



The special shape of this multi-purpose foot makes it particularly suitable for free-motion embroidery, contour quilting, and producing attractive lace and monograms. Small holes and tears can also be repaired using the hosiery darning hoop.



<https://www.bernina.com/foot-9>

9	002 584 72 00	A							
9	008 454 74 00		B	C	D	Ea ²⁺⁴	Eb ²⁺⁴	Ec	F

Freehand Embroidery Foot #24



The open embroidery sole offers a free, unobstructed view of the embroidery area. Precise and creative free-motion projects such as monogram, silk-ribbon and Richelieu embroidery and thread painting can be accomplished with ease. The freehand embroidery foot is also excellent for contour quilting and free-motion quilting of tiny details (microstippling).



<https://www.bernina.com/foot-24>

24	002 593 72 00	A							
24	008 467 74 00		B	C	D	Ea ²⁺⁴	Eb ²⁺⁴	Ec	F

Quilting Foot #29/29C



This quilting foot is used for topstitching quilts with thick and thin padding. The clear sole ensures an unobstructed view of the entire sewing area, which is important for positioning stitches precisely. The foot is especially suited to free-motion quilting tasks such as contour quilting, thread painting and stipple quilting.



<https://www.bernina.com/foot-29>

29	001 128 72 00	A							
29	008 469 73 00		B	C	D	Ea ²⁺⁴	Eb ²⁺⁴	Ec	F
29C	008 880 74 00			C	D	Ea ³⁺⁴	Eb ³⁺⁴	Ec ³	F

Quilting

BERNINA Stitch Regulator (BSR) #42



The perfect foot for free-motion quilting with a controlled stitch length on all materials. The BSR reacts to the movement of the fabric and controls the speed of the needle during free-motion sewing. The set stitch length is maintained irrespective of the movement of the fabric, resulting in absolutely even stitch formation.

42 031 472 74 01 B4,5 C2,3[■] D Ea²⁻⁴ Eb²⁻⁴ Ec²⁺³ F
[■] C2: 730



Echo-Quilting and CutWork Foot #44C



This presser foot is the ideal companion for a host of creative sewing projects such as echo and shadow quilting, free-motion quilting, thread painting, and free-motion embroidery with zigzag stitch. The disc-shaped clear sole moves easily over raised areas of fabric. The crosshair and concentric circular markings help you position the stitches precisely. In addition, this foot produces excellent cutting results with CutWork designs.

44C 033 369 72 00 B C D E F



Adjustable Ruler Foot #72/72S



Use this adjustable foot to sew along a 1/4-inch-thick plexiglass ruler and create decorative quilt designs such as lines, feathers and circles. The markings on the inside and outside allow for precise sewing, and the dial lets you adjust the height of the foot individually to the fabric thickness. The presser foot #72S can be replaced without cutting the thread. This makes it easy to switch from Rulerwork to other applications. Both presser feet are compatible with the couching inserts and the echo quilting clips.

72 105 121 70 00 A
 72 101 786 70 00 B C D Ea²⁻⁴ Eb²⁻⁴ Ec F
 72S 105 803 70 00 B C D Ea²⁻⁴ Eb²⁻⁴ Ec F with Slit

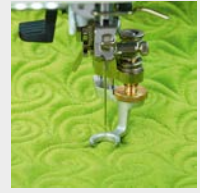


Quilting

Adjustable Stippling Foot #73



This height-adjustable presser foot is the perfect foot for free-motion quilting and embroidery. Especially for quilting small patterns and detail work. The open shape of the presser foot sole provides a perfect view of the sewing good. Due to the adjustment wheel, the foot height can be individually adjusted to the fabric thickness. The dull gray coating of the foot prevents the user from being dazzled.



<https://www.bernina.com/foot-73>

73	105 120 70 00	A							
73	104 211 70 00		B	C	D	Ea ²⁺⁴	Eb ²⁺⁴	Ec	F

Adjustable Gliding Cup Foot #74



The height adjustability by operating the adjustment wheel makes it possible to adjust the foot to all fabric thicknesses as required. The foot is perfect for free-motion, echo and shadow quilting, yarn painting, straight and zigzag stitches as well as appliqués. Due to the high cup of the foot it glides perfectly over applications, thick seams and decorations. The transparent cup provides a very good view of the sewing good.



<https://www.bernina.com/foot-74>

74	105 118 70 00	A							
74	104 213 70 00		B	C	D	Ea ²⁺⁴	Eb ²⁺⁴	Ec	F

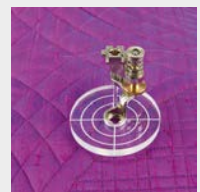
Echo-Quilting Clips



When working with the echo quilting Clips, you sew along a plexiglass ruler to create decorative quilt patterns such as lines, feathers, circles etc. Due to the imprinted markings on the clips exact working goes smoothly. They are to be used in combination with the Adjustable Ruler Foot #72 and the Ruler Kit.

Content of set

- 1x echo quilting clip, radius 1/2 Inch
- 1x echo quilting clip, radius 3/4 Inch
- 1x echo quilting clip, radius 1 Inch



<https://www.bernina.com/Echo-quilting-Clips>

102 959 71 00			B	C	D	Ea ²⁺⁴	Eb ²⁺⁴	Ec	F
---------------	--	--	---	---	---	-------------------	-------------------	----	---

Quilting

Couching Inserts



With these couching inserts strings, cords, wool or felt threads can be sewn or embroidered on the project in an artistic way. Either guided along a plexiglass ruler or as free as you please. They are to be used in combination with the Adjustable Ruler Foot #72 and the Ruler Kit.

Content of set

1x couching insert, Ø 1.4 mm

1x couching insert, Ø 1.8 mm

1x couching insert, Ø 2.2 mm

102 960 71 00

B

C

D

Ea²⁻⁴

Eb²⁻⁴

Ec

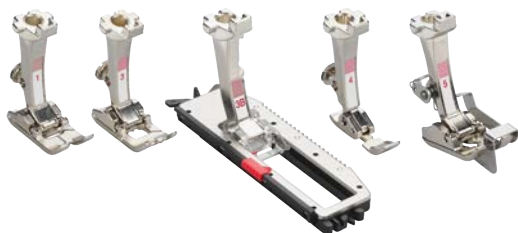
F



[https://www.bernina.com/
couching-inserts](https://www.bernina.com/couching-inserts)

Presser Foot Sets

Presser Foot Set



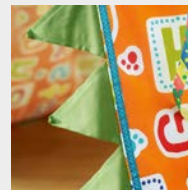
This set for 5.5 mm machines contains the following 5 practical presser feet for special stitches and sewing tasks.

Content of set

Reverse Pattern Foot #1
 Buttonhole Foot #3
 Buttonhole Foot with Slide #3B
 Zipper Foot #4
 Blindstitch Foot #5

031 662 71 00

B

Ea²Eb²Ec¹

<https://www.bernina.com/presser-foot-set>

Presser Foot Set D



This set for 9 mm machines contains the following presser feet and represents a useful basic set.

Content of set

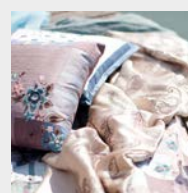
Jeans Foot #8D
 Edgestitch Foot #10D
 Open Embroidery Foot #20D
 Reverse Pattern Foot with Clear Sole #34D
 Patchwork Foot #97D

031 662 71 01

D

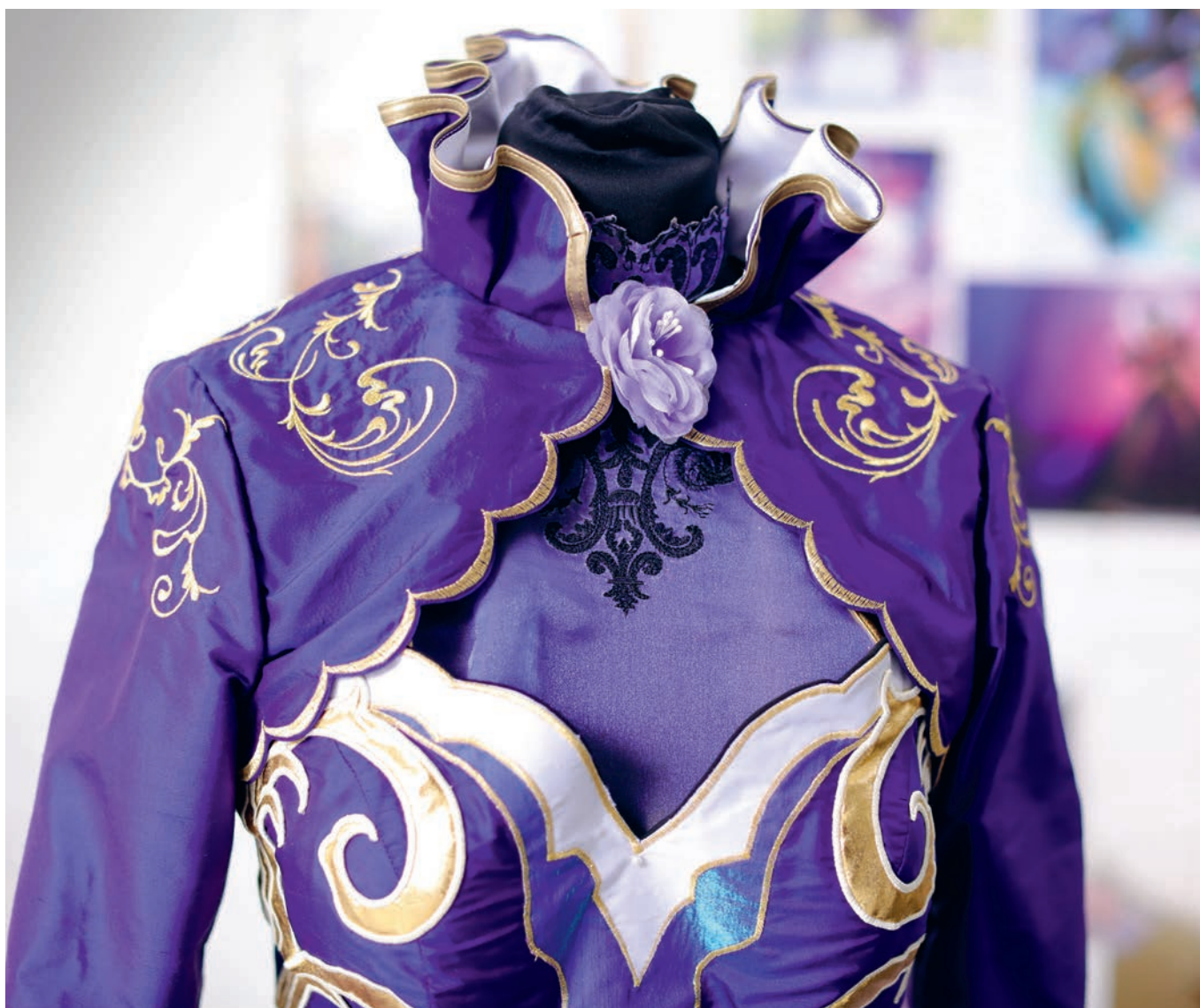
Ea³⁺⁴Eb⁴

F



<https://www.bernina.com/presser-foot-set-D>

ACCESSORIES FOR SEWING MACHINES



Accessories for Sewing Machines

Adapter Shank #75/77



The foot extensions are used to attach various accessories to the machine in combination with the Ruffler #86.



<https://www.bernina.com/standard-adapter-shank-75>

75	032 705 71 00	A								Standard
75	032 702 71 00	B	C	D	Ea ²⁺⁴	Eb ²⁺⁴	Ec	F		Standard
77	032 713 71 00	A								short
77	032 710 71 00	B	C	D	Ea ²⁺⁴	Eb ²⁺⁴	Ec	F		short

Snap On Shank #78



Snap-on presser feet consist of a snap on shank and various snap-on soles, depending on their use. A clamping mechanism ensures easy and secure attachment of the sole.



<https://www.bernina.com/snap-on-shank-78>

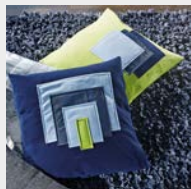
78	032 703 71 00	A1 [■]								
78	032 725 71 00	B	C	D	Ea ²⁺⁴	Eb ²⁺⁴	Ec	F		

■ A1: 1008

Patchwork Seam Guide



The patchwork seam guide helps you sew patchwork and hems accurately. It can be adjusted to sit right at the edge of the presser foot, or can be attached a slight distance from the edge of the foot.



<https://www.bernina.com/patchwork-seam-guide>

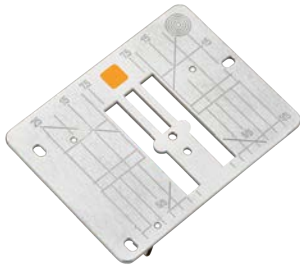
032 706 71 00	A	B	C	D	Ea ²⁺⁴	Eb ²⁺⁴	Ec	F		Set (incl. screw)
330 030 131+	A	B	C	D	Ea ²⁺⁴	Eb ²⁺⁴	Ec	F		Screw

Accessories for Sewing Machines

BERNINA Stitch Plates

In addition to the standard stitch plate supplied with the machine, BERNINA offers other stitch plates for specific applications. Each has its own color code identifying it with the relevant application. The stitch plates differ from one another mainly in terms of the design of the needle hole and the engraved measurements in mm, inches, or a combination of both.

Straight and CutWork Stitch Plate



The Straight and CutWork Stitch Plate is color-coded orange. It can be used for straight-stitching and embroidery, as well as for CutWork and CrystalWork projects. When straight-stitching, perfect stitch formation is achieved by using this stitch plate with a presser foot with a small opening, such as foot #8, #26, #53, #62 or #64.



<https://www.bernina.com/straight-cutwork-stitch-plate>

006 857 70 01	A1 [■]	mm
003 098 70 00	A2	mm
003 098 70 01	A2	Inch
033 339 71 04	B1 [□]	mm/Inch
033 339 72 00	B1,4,5 [◆]	mm/Inch
033 339 71 03	B2,3	mm/Inch
033 339 71 02	C1,2	mm/Inch 1.4 mm
008 865 71 03*	C1,2	mm/Inch 2.0 mm
033 339 73 13	C3	mm/Inch
033 339 71 07	D	Ea ³⁺⁴ Eb ³⁺⁴ Ec ³ mm/Inch
033 339 70 14		Ea ² Eb ² Ec ¹⁺² mm/Inch
034 914 70 00		F mm/Inch

* While stocks last
[■] A1: 1000 – 1530
[□] B1: 125 – 145
[◆] B1: 210 – B 380

9-mm Stitch Plate with 5.5-mm Stitch Hole



Color-coded purple, this stitch plate has a reduced needle-hole width of 5.5 mm. Suitable for all 9 mm machines, it achieves particularly good results when sewing thin or soft materials. All zigzag and decorative stitches up to a width of 5.5 mm can be used to create detailed sewing projects.



<https://www.bernina.com/stitch-plate-9mm>

006 216 70 01*	A2	mm
033 339 72 11*	C1,2	mm/Inch
033 339 71 10	C3	mm
031 045 70 01	C3	Inch
033 339 70 08	D	Ea ³⁺⁴ Eb ³⁺⁴ Ec ³ mm/Inch
034 915 70 00		F mm

* While stocks last

Accessories for Sewing Machines

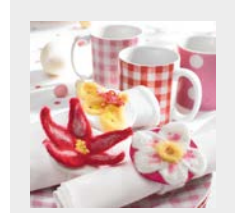
5.5-mm PunchWork Stitch Plate



This CB hook stitch plate can be used for both sewing and felting. The large round opening is for the felting needles.

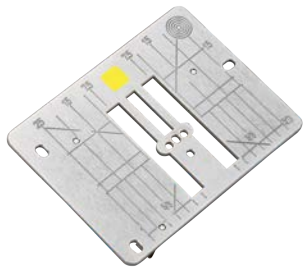
033 371 70 06*	B1 [■]
031 050 70 10*	B1,4,5 [□]
007 874 71 10*	B2,3

* While stocks last
[■] B1: (125– 145 S)
[□] B1: 210 – B 380



<https://www.bernina.com/punchwork-stitch-plate-5mm>

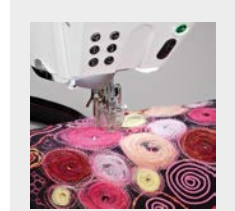
PunchWork Stitch Plate



Color-coded yellow, this stitch plate has three needle holes arranged lengthways for the felting needles. Close guiding of the needles means better support of the material.

033 691 70 00*	C1,2
033 690 70 00	C3
033 339 71 06	D Ea ¹⁺³⁺⁴ Eb ¹⁺³⁺⁴ Ec ³
033 685 71 00	F

* While stocks last



<https://www.bernina.com/punchwork-stitch-plate>

CB Hook Bobbins and Bobbin Cases

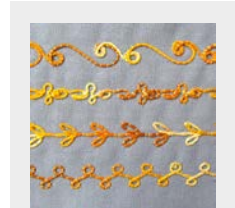


Each BERNINA hook system has its own bobbin cases for sewing, embroidery and bobbinwork. There is a bobbin to match each bobbin case.

001 536 72 00	A1 [■] B
034 320 71 07	A1 [■] B
034 320 71 06	A1 [■] B

[■] A1: 910 – 933, 1004 – 1031, 1080 – 1530

- 1) Single bobbin
- 2) Bobbin case for sewing and embroidery
- 3) Bobbin Case for Bobbinwork



<https://www.bernina.com/CB-hook-bobbin-cases>

Accessories for Sewing Machines

Rotary Hook Bobbins and Bobbin Cases



Each BERNINA hook system has its own bobbin cases for sewing, embroidery and bobbinwork. There is a bobbin to match each bobbin case.

330 026 03 0+	A1 [■]	1) Single bobbin
006 026 53 00	A1,2 [□] C	2) Single bobbin
032 295 54 00	F	3) Single bobbin
033 210 72 00	F	3) Bobbins in box (5 pieces)
034 320 71 05	A1,2 [□] C	4) Bobbin case for sewing
034 320 71 04	C	5) Bobbin Case for Embroidery

[■] A1: 940/950
[□] A1: 1000 – 1001, 1050 – 1070

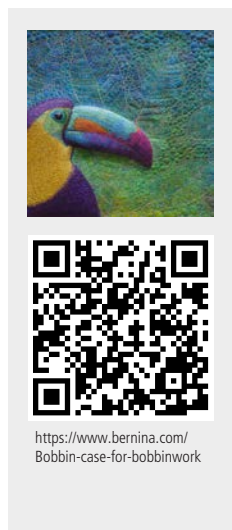


B9/BERNINA Hook Bobbins and Bobbin Cases



Each BERNINA hook system has its own bobbin cases for sewing, embroidery and bobbinwork. There is a bobbin to match each bobbin case.
 The 7 Series has two hooks: the B9 hook and the BERNINA hook.
 To distinguish between them, all BERNINA hook components are marked with a triangle, as are the bobbin cases.

033 436 54 00	D	E	1) Single bobbin
033 210 70 01	D	E	1) Bobbins in box (5 pieces)
034 320 71 01	D		2) Bobbin case for sewing and embroidery
034 320 71 03	E		3) Bobbin case for sewing and embroidery
034 320 70 00	D		4) Bobbin Case for Bobbinwork
034 320 71 02	E		5) Bobbin case for bobbinwork
034 320 70 09	E		6) High thread tension bobbin case

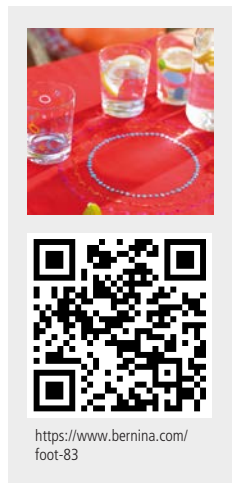


Circular Embroidery Attachment #83



The circular embroidery attachment allows you to sew fancy and decorative circles or semicircles of various diameters using utility or decorative stitches or lettering. It is also suitable for appliquéing ribbons. Using the extension table increases the sewing-bed area, making it ideal for precise decorative sewing.

83 008 373 74 00	B	C	D	Ea ²⁻⁴	Eb ²⁻⁴	Ec	F
-------------------------	---	---	---	-------------------	-------------------	----	---



Accessories for Sewing Machines

Eyelet Embroidery Attachment #82 with Foot #92



82 008 359 75 00 B C D Ea²⁻⁴ Eb²⁻⁴ Ec F

Used with presser foot #92 (included), this device enables you to embroider beautiful decorative and functional eyelets, which are very popular on sportswear and materials such as jersey.



<https://www.bernina.com/foot-82>

Presser Foot for Eyelet Embroidery #92



92 032 718 70 00* B C D Ea²⁻⁴ Eb²⁻⁴ Ec F

* While stocks last

Suitable for use with Eyelet Embroidery Attachment #82, this freehand embroidery foot is used to embroider eyelets and for functional decorative purposes.



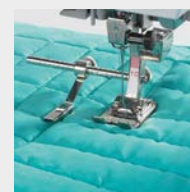
<https://www.bernina.com/foot-92>

Adjustable Guide



032 855 71 00 A B C D Ea²⁻⁴ Eb²⁻⁴ Ec F

The adjustable guide consists of a guide tool and an edge guide, and allows you maintain even spacing between rows of straight or decorative stitching. It is very helpful when making quilted lining, patchworking, or engaging in other decorative sewing tasks. The adjustable edge guide is used primarily to create precise seams and perfect hems, and ensures particularly good results when edge-stitching. The guide tool and edge guide can be attached to the shaft of most presser feet.



<https://www.bernina.com/Adjustable-Guide>

Accessories for Sewing Machines

Right and Left Seam Guide



This seam guide for the right or left of the needle is a guide tool. It is used to maintain parallel spacing between rows of stitching and for neat, straight edges and hems.



<https://www.bernina.com/right-left-seam-guide>

033 338 71 00	A	B	C	D	Ea ²⁻⁴	Eb ²⁻⁴	Ec	F	right
033 338 70 01	A	B	C	D	Ea ²⁻⁴	Eb ²⁻⁴	Ec	F	left

Seam Guide with Scale



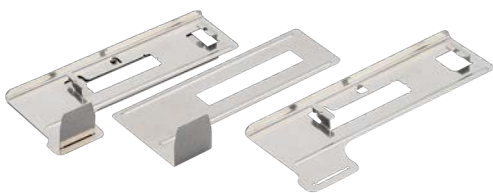
Used as a guide tool to the right and left of the needle, the Seam Guide with scale helps with traditional sewing tasks as well as with more complex sewing projects. Marked in centimeters and inches, the scale allows you to sew parallel lines accurately and to maintain an even distance between rows of stitching.



<https://www.bernina.com/seam-guide-with-scale>

003 027 71 00	A	B	C	D	Ea ²⁻⁴	Eb ²⁻⁴	Ec	F	Set
----------------------	---	---	---	---	-------------------	-------------------	----	---	-----

Fabric-feeding Aid for Sewing Buttonholes



In combination with the Buttonhole Foot with Slide #3A/3B this fabric-feeding aid improves the feed when sewing buttonholes in thick, fluffy and elastic materials, and it is especially suitable for sewing a buttonhole close to an edge.



<https://www.bernina.com/fabric-feeding-aid>

031 247 71 00	B	C	D	Ea ²⁻⁴	Eb ²⁻⁴	Ec	F
----------------------	---	---	---	-------------------	-------------------	----	---

Accessories for Sewing Machines

Buttonhole Leveler



The leveler improves the feed of the Buttonhole Foot with Slide #3A/3C when sewing buttonholes in fabrics of different heights, e.g. along finished edges.



<https://www.bernina.com/buttonhole-leveler>

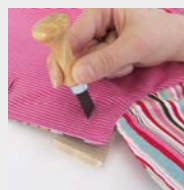
033 332 70 01	A2	B [■]	C	D	Ea ²⁻⁴	Eb ²⁻⁴	Ec	F	wide
033 332 70 00*	A1 [□]								narrow

* While stocks last
 ■ B1: 135 – 145, 230 – B 380
 □ A1: 1130, 1230

Buttonhole Cutter with Wooden Block



Measuring 1.3 mm (1/2") in width, this buttonhole cutter is used to open up sewn buttonholes.

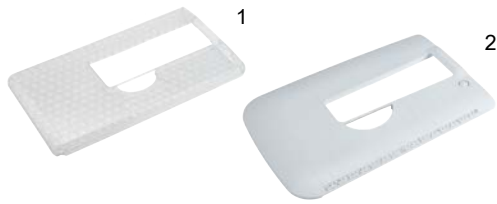


<https://www.bernina.com/buttonhole-cutter>

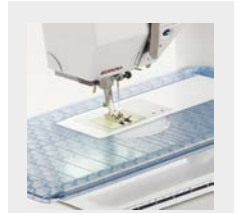
032 580 71 00	A	B	C	D	Ea ²⁻⁴	Eb ²⁻⁴	Ec	F
----------------------	---	---	---	---	-------------------	-------------------	----	---

Accessories for Sewing Machines

Slide-on Table



The slide-on table increases the work surface whilst facilitating fabric passage over the free-arm.



<https://www.bernina.com/free-arm-slide-on-table>

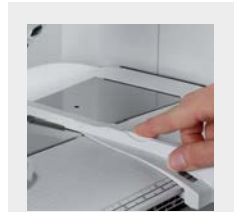
003 175 70 00	A1,2 [■]				with seam guide
030 347 51 01	B1 [□]				1)
033 045 70 00	B1 [□]				1)
031 073 52 01	B4	C3			1)
033 114 71 00	B4,5	C3			2) with quick release button
008 868 50 00	B2,3	C1,2			2)
033 131 70 00		D	Ea		2)
103 254 70 00			Eb		2)
103 493 71 00			Ec		2)
031 846 72 00				F	2)

■ A1: 1000 – 1530
 □ B1: 125 – 240
 ◆ B1: B 325 – B 380

Seam Guide for Slide-on Table



The seam guide for slide-on table is a useful tool for topstitching wide borders and hems.



<https://www.bernina.com/seam-guide-slide-on-table>

002 909 51 00	A1 [■]				
033 046 70 00	B1,4,5 [□]	C3	Eb ²⁻⁴	Ec	
030 726 70 00	B2,3	C1,2			
032 527 71 00		D	Ea ²⁻⁴		F

■ A1: 1008
 □ B1: B 325 – B 380

Accessories for Sewing Machines

Plexiglass Slide-on Table for Quilting



The slide-on table for quilting increases the work surface of the sewing machine, which is very helpful when working on large quilting and sewing projects.



<https://www.bernina.com/plexiglass-extension-table>

030 129 72 01*	A1,2 [■]	60 x 45 cm
030 129 72 09	B1	60 x 60 cm
030 129 72 04	B4,5 C3	60 x 60 cm
030 129 72 08	D Ea ²⁺⁴	60 x 45 cm
030 129 70 10	Eb ²⁺⁴	60 x 45 cm
030 129 70 11	Ec	60 x 45 cm
030 129 71 06	F	60 x 45 cm

* While stocks last
 ■ A1: 1000 – 1530

Ruler Kit



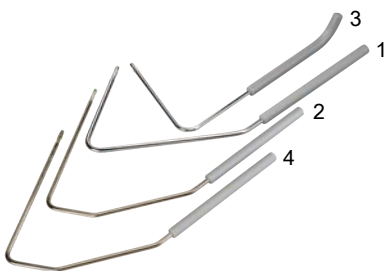
These rulers can be used in combination with the Adjustable Ruler Foot #72 to create decorative quilt patterns. The height of the individual rulers allows for easy handling together with the quilt project below the presser foot.



<https://www.bernina.com/ruler-kit>

102 379 70 01	B C D Ea ²⁺⁴ Eb ²⁺⁴ Ec F
---------------	--

Free Hand System (FHS)



BERNINA's unique Free-Hand System (FHS) lets you raise the presser foot while simultaneously lowering the feed dog via a knee-operated lever. This also increases the gap between stitch plate and presser foot, and leaves both hands free to guide your project.

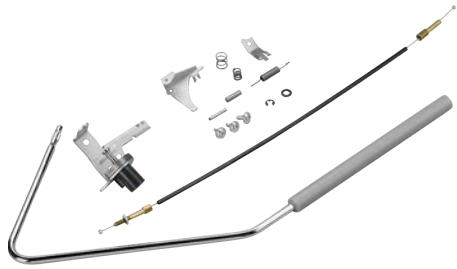


<https://www.bernina.com/freehand-system>

001 635 77 00	A B C	1) FHS Standard
001 635 77 01	A B C D Ea ²⁺⁴ Eb ²⁺⁴ Ec	2) FHS for sewing-machine cabinet
001 635 73 02	A B1-4 C	3) FHS Special (short)
001 635 77 04	F	4) FHS Standard

Accessories for Sewing Machines

Free-Hand System (FHS) Retrofit Kit



The retrofit kit is ideal for retrofitting a knee lifter.

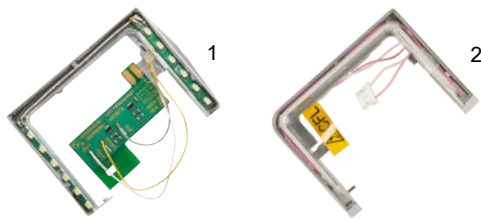
030 146 70 00*	B1
008 610 71 00	B2,3 C1

* While stocks last



<https://www.bernina.com/free-hand-system-retrofit-kit>

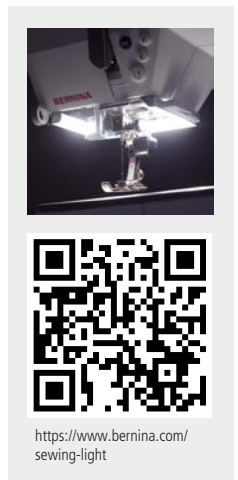
Sewing Light



Boasting a very long service life, this light illuminates the sewing area with bright-as-day light, allowing you to sew with precision and accuracy.

030 753 70 00	B1 [■]	2) CFL
004 992 74 00	B2,3 [□] C1,2 [◆]	1) LED
030 683 74 00	B4 C3	2) CFL

■ B1: 125 – 240
 □ B2: 155 + 163
 ◆ C1: 185



<https://www.bernina.com/sewing-light>

Hosiery Darning Hoop



Used together with Darning Foot #9, the hosiery darning hoop lets you darn hosiery, socks and other textiles in no time flat, and prevents the fabric from puckering or wrinkling.

001 548 71 01	A	B1,4,5 C3	Ec
001 548 71 03		B2,3 C1,2 D	Ea ²⁻⁴ Eb ²⁻⁴ F



<https://www.bernina.com/hosiery-darning-hoop>

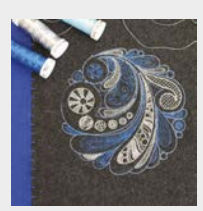
Accessories for Sewing Machines

Guide Eyelet for Metallic and Silk Thread



008 814 72 00 B C

This eyelet acts as an additional thread guide, preventing metallic and silk threads from slipping off the spool.



<https://www.bernina.com/guide-eyelet>

Thread-lubrication Unit

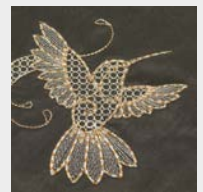


031 161 73 00 A B C D E

033 596 70 00 F

031 963 50 00 Silicone fluid

The use of the thread-lubrication unit is particularly recommended when working with metallic and loosely twisted threads. The silicone fluid greatly improves the friction properties of these threads and effectively protects delicate threads from damage and breaking.



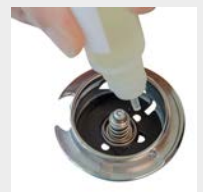
<https://www.bernina.com/thread-lubrication-unit>

Sewing Machine Oil



033 567 71 01 D E F

Regular care ensures that your sewing machine runs smoothly. Lubricating with this convenient oil pen is an important part of it.



<https://www.bernina.com/sewing-machine-oil>

Accessories for Sewing Machines

Magnifying Lens Set



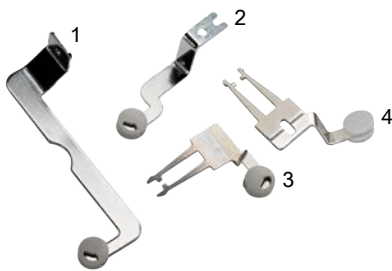
The practical magnifying lens set enhances your view of the working area. The three lenses have magnification factors of 1.25, 1.5 and 2, making it easier to thread the needle and sew tricky areas. The set can also be used with a hand holder as a practical reading lens.

008 264 75 00 A B C D E F



<https://www.bernina.com/magnifying-lens-set>

Mounting Bracket for Magnifying Lens and PunchWork Tool



Mounting racket for attaching the magnifying lens or PunchWork tool.

033 853 70 01	B1	1)
033 853 70 00*	B2,3 C1,2	2)
033 853 70 02	B4,5 C3	3)
033 853 72 03	D E	4)
032 052 70 00		F

* While stocks last



<https://www.bernina.com/mounting-bracket>

PunchWork Tool for CB Hook



Ideal for needle-felting with wool yarns or loose wool fibers, the PunchWork tool for CB hook machines lets you work decorative designs and motifs into fabrics such as felt, wool, loden cloth, fulled fabrics and denim with no lycra. This tool should be used in conjunction with the 5.5-mm PunchWork stitch plate.

031 571 72 00 B



<https://www.bernina.com/punch-work-tool>

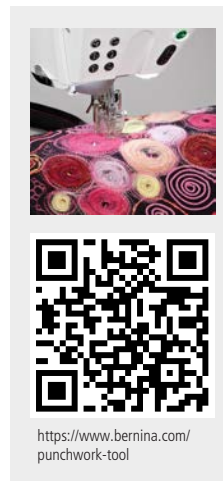
Accessories for Sewing Machines

PunchWork Tool for Rotary, B9 and BERNINA Hook



Ideal for needle-felting with wool yarns or loose wool fibers, the PunchWork tool for CB hook machines lets you work decorative designs and motifs into fabrics such as felt, wool, loden cloth, fulled fabrics and denim with no lycra. The clear finger guard is height-adjustable, and there is a holder at the front and back for different thicknesses of felting yarn and tapes. This tool should be used in conjunction with the PunchWork stitch plate.

033 678 72 00 C D Ea¹⁺³⁺⁴ Eb¹⁺³⁺⁴ Ec² F

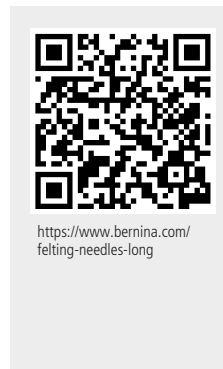


Felting Needles



Felting needles are special barbed needles which punch fibers into a base fabric for decorative purposes.

032 178 71 00 B 1) long
 033 940 70 00 C D Ea¹⁺³⁺⁴ Eb¹⁺³⁺⁴ Ec² F 2) short



USB Stick



The USB stick is a handy portable storage medium for storing data, embroidery patterns and update files.

104 081 70 00 C3[■] D[□] E F[◆]

■ C3: 435, B 560, B 580
 □ Firmware update may be required
 ◆ F: B 880, B 880 PLUS



Accessories for Sewing Machines

Multiple-spool Holder



The Multiple-spool Holder enables rapid access to threads as well as quick color changes, which is especially useful for multi-colored embroidery motifs. The path from the telescopic thread stand to the needle is also longer, allowing difficult yarns to untangle before being sewn.






<https://www.bernina.com/multiple-spool-holder>

008 983 75 00	B2,3,4,5	C	D	E	F	
030 205 72 01	B2,3,4,5	C	D	E	F	Adapter

Multiple-spool Holder Extension



This practical extension allows even more spools to be used.

<https://www.bernina.com/multiple-spool-holder-extension>

008 979 71 00	B2,3,4,5	C	D	E	F	
----------------------	----------	---	---	---	---	--



Accessories for Sewing Machines

BERNINA Accessory Box



The practical BERNINA Accessories Box stores your presser feet, bobbins, needles and tools neatly so they are always visible and to hand. Fold-out feet ensure a secure position at the workplace.




<https://www.bernina.com/accessories-box>

030 396 72 04	B1 [■]				
030 396 72 13	B1,4,5 [□]	C3 [◆]			
030 396 72 03	B2,4 [○]				
030 396 71 01		C1,2			
030 396 72 05		C3 [■]			
030 396 72 12		D	Ea		
103 255 71 00			Eb	Ec	
030 396 73 11					F

■ B1: 125 – 240
 □ B1: B 330 – B 380; B4: B 555, B 570 QE
 ◆ C3: B 560, B 580
 ○ B4: 430, 440 QE, 630
 ■ C3: 435, 450, 640

Touchscreen Pen



For easy operation of the touchscreen on sewing and embroidery machines. The pen is magnetic and can be attached to the right side of the machine. Using the touchscreen pen helps keep the screen clean.



<https://www.bernina.com/touchscreen-pen>

033 333 71 00	B3,4 [■]	C1,2,3 [□]	D	Ea	F	1)
104 090 70 00				Eb	Ec	2)

■ B4: B 555, B 570 QE, 630
 □ C3: B 560, B 580, 640

Carrying Bags for Sewing Machines and Embroidery Modules



Keep your sewing machine and embroidery module in tip-top condition while you're traveling. The inner compartments provide additional space for storing accessories.



<https://www.bernina.com/carrying-bag-sewing-machine>

033 284 52 00	B	C				1)
030 895 51 03	B3,4	C				2)

Accessories for Sewing Machines

Carrying Case



The carrying case protects your sewing machine from dust and dirt. It has a built-in accessories compartment.



<https://www.bernina.com/carrying-case>

001 898 72 02* A1[■]

001 559 71 07* A1,2[□]

031 101 71 00* B2,3 C1,2

* While stocks last
[■] A1: 1000 – 1050
[□] A1: 1070 – 1530

Accessory Bag



The practical accessory bag can either be attached to the trolley, or carried as a shoulder bag. The various pockets inside and outside provide plenty of space for presser feet, accessories and a 15-inch laptop.



037 214 70 00 A B C D E F

Accessory Case



This accessory case is suitable when you are at home or on the move. It offers plenty of space for over 40 presser feet, several bobbins, bobbin cases, as well as stitch plates and other accessories. With its 3 removable layers, it is very flexible and can be packed as requested. Also smaller accessories find their place in the centrally sewn-in panel with different compartments.



<https://www.bernina.com/accessory-case>

104 265 71 00 A B C D E F



Accessories for Sewing Machines

L Trolley System



The practical trolley and embroidery-module bag are very sturdy, and are perfect for transporting your machine when you're on the go. Numerous inner and outer pockets offer plenty of room for accessories. Robust wheels and an extendable telescopic handle allow you to pull your sewing machine and attached embroidery module behind you with ease. The side handles are also convenient when loading and unloading the bags. The embroidery-module bag can be attached to the trolley's telescopic handle or carried separately with the adjustable shoulder strap.



<https://www.bernina.com/L-trolley>

036 180 71 01	A	B	C	Eb	Ec	1)
---------------	---	---	---	----	----	----

033 476 71 01	B3,4	C	Eb			2)
---------------	------	---	----	--	--	----

XL Trolley System



The practical trolley and embroidery-module bag are very sturdy, and are perfect for transporting your machine when you're on the go. Numerous inner and outer pockets offer plenty of room for accessories. Robust wheels and an extendable telescopic handle allow you to pull your sewing machine and attached embroidery module behind you with ease. The side handles are also convenient when loading and unloading the bags. The embroidery-module bag can be attached to the trolley's telescopic handle or carried separately with the adjustable shoulder strap.



<https://www.bernina.com/XL-trolley>

036 180 70 00	D	Ea	F			1)
---------------	---	----	---	--	--	----

033 476 70 00	D2	Ea ¹⁺²⁺⁴	F2			2)
---------------	----	---------------------	----	--	--	----

Needle Assortment



The BERNINA Needle Assortment contains high-quality needles of various types and sizes for different materials and applications.



<https://www.bernina.com/needle-assortment>

Accessories for Sewing Machines

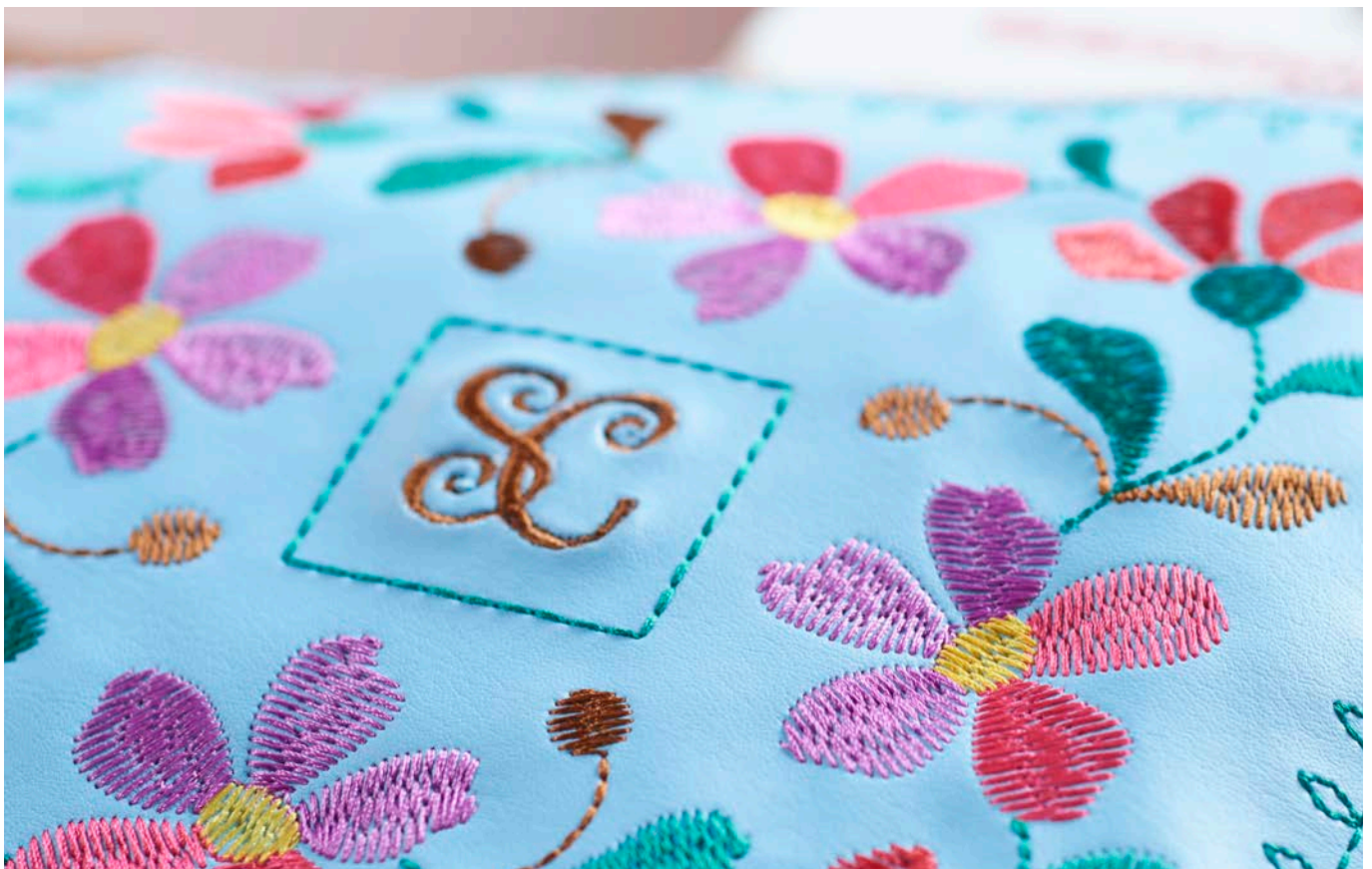
BERNINA Flat-shank Needles

Needle Type		Color Application	Color Needle Size NM							
Short-groove needle	130/705 H	Universal Needle	No color	60	70	80	90	100	110	120
	130/705 H-J	Jeans Needle	Blue			80	90	100	110	
	130/705 H-M	Microtex Needle	Violet	60	70	80	90			
	130/705 H-N	Topstitch Needle	Light green			80	90	100		
	130/705 H-Q	Quilting Needle	Green			75	90			
	130/705 H WING	Hemstitch Needle	No color					100		120
	130/705 H METAFIL	Metafil Needle	Antique pink			80				
	130/705 H-E	Embroidery Needle	Red			75	90			
	130/705 H SUK	Jersey/Embroidery Needle	Orange	60	70	80	90	100		
	130/705 H-S	Stretch Needle	Yellow			75	90			
	130/705 H SES	Fine Fabrics Needle	No color		70	80	90*			
	130/705 H LR	Leather Needle	Brown				90	100		
	Long-groove needle	130/705 H PRO	Universal needle	No color				90	100	110
130/705 H-J PRO		Jeans Needle	No color			80	90	100		
130/705 H SUK PRO		Jersey/Embroidery Needle	No color			80	90	100		
Special needle	130/705 H ZWI	Universal Twin Needle Gap (mm)	No color	70	80	90	100			
	130/705 H-S ZWI	Stretch Twin Needle Gap (mm)	No color	1.6	2.0	3.0	4.0			
	130/705 H ZWIHO	Hemstitch Twin Needle Gap (mm)	No color					100		
	130/705 H DRI	Universal Triple Needle Gap (mm)	No color					2.5		
	PUNCH	Felting Needle	No color							
	130/705 DE	Double eye Needle	No color			80				
	ELx705 CF	Coverstitch Needle	Black			80*	90*			
	ELx705 SUK CF	Jersey/Coverstitch Needle	Black			80*	90*			

* Only available in an assortment.

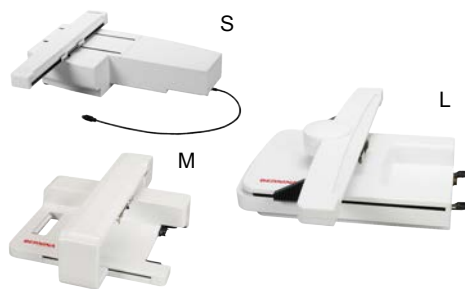


ACCESSORIES FOR EMBROIDERY MACHINES



Accessories for Embroidery Machines

Embroidery Modules



The large embroidery area of the embroidery module makes working on your creative projects a breeze. The embroidery module turns a BERNINA sewing machine into an embroidery machine, enabling you to produce stunning and reliable results in a next to no time.

The new BERNINA Smart Drive Technology (SDT) module elevates your embroidery experience with enhanced stitch quality, smoother and quieter movement and up to 55% higher embroidery speed.

024 580 9 0XX [■]	B4	C2,3 [□]				S
024 590 90 00*						M
024 592 90 00						M (SDT)
024 880 92 00*		D2	Ea ¹⁺²⁺⁴	F2		L
024 882 90 00		D2	Ea ¹⁺²⁺⁴	F2		L (SDT)

* While stocks last

■ Last two digits vary depending on country.

□ C2: 200



<https://www.bernina.com/embroidery-module-l-sdt>

Plexiglass Slide-on Table for Embroidery Module



The slide-on table for the embroidery module provides additional space around the embroidery hoop, thereby distributing the weight of large embroidery projects evenly.

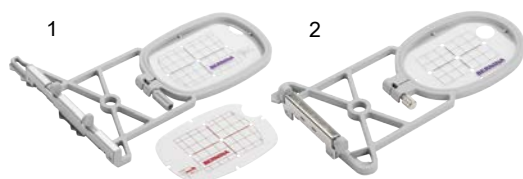
030 129 71 05*	B4,5	C3				60 x 45 cm
030 129 71 03*	B3	C1,2				60 x 45 cm

* While stocks last



<https://www.bernina.com/extension-embroidery-module>

Small Embroidery Hoop



For small embroidery designs and free-arm embroidery of tubular items such as sleeves, trouser legs or similar. The template allows accurate positioning of the motif on the item to be embroidered.

Embroidery area

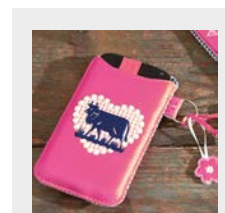
1: 5.0 × 7.2 cm

2: 4.0 × 6.0 cm

030 869 72 00	B4	C1,2,3 [■]	D2	Ea ¹⁺²⁺⁴	Eb	F2	1)
008 916 70 00	B3	C1 [□]					2)

■ C1: 185

□ C1: 180



<https://www.bernina.com/small-embroidery-hoop>

Accessories for Embroidery Machines

Medium Embroidery Hoop

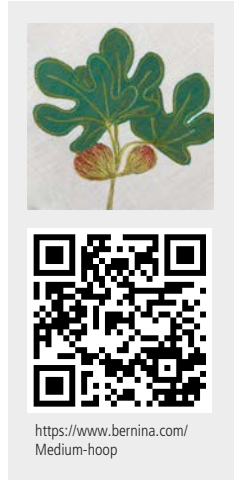


This hoop is large enough to accommodate attractive medium-sized embroidery designs. The template allows accurate positioning of the motif on the item to be embroidered.

Embroidery area
10 × 13 cm

030 871 72 00	B4	C1,2,3 [■]	D2	Ea ¹⁺²⁺⁴	Eb	F2	1)
008 915 70 00	B3	C1 [□]					2)

■ C1: 185
□ C1: 180



Large Embroidery Hoop



The big embroidery hoop for large-scale embroidery designs or combinations of motifs. The template allows accurate positioning of the motif on the item to be embroidered.

Embroidery area
15.5 × 20 cm

008 914 73 00	B3	C1 [■]					
----------------------	----	-----------------	--	--	--	--	--

■ C1: 180



Large Oval Embroidery Hoop

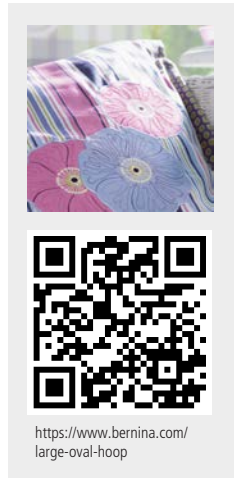


Designed for large embroidery projects, the large oval hoop is ideal for combining several small motifs. The template allows accurate positioning of the motif on the item to be embroidered.

Embroidery area
14.5 × 25.5 cm

030 870 74 00	B4	C1,2,3 [■]	D2	Ea ¹⁺²⁺⁴	Eb	F2	
030 575 50 01	B4	C1,3 [■]					Template
030 575 51 00	C2	D2	Ea ¹⁺²⁺⁴	Eb	F2		Template, violet

■ C1: 185



Accessories for Embroidery Machines

Mega Embroidery Hoop

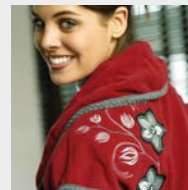


030 580 75 00 B4 C2,3 D2 Ea¹⁺²⁺⁴ Eb F2

The embroidery hoop for extra-large embroidery designs and combinations of motifs, as well as borders. The three embroidery positions allow you to embroider precisely without mismatches or gaps. The template allows accurate positioning of the motif on the item to be embroidered.

Embroidery area

15 × 40 cm



<https://www.bernina.com/Mega-Hoop>

Midi Embroidery Hoop



102 374 70 00 D2 Ea¹⁺²⁺⁴ Eb F2

Designed for large embroidery projects, the large oval hoop is ideal for combining several small motifs. The template allows accurate positioning of the motif on the item to be embroidered. A large rotating knob with a ratchet mechanism allows for easy hooping and unhooping of the material. The template allows accurate positioning of the motif on the item to be embroidered.

Embroidery area:

26.5 × 16.5 cm



<https://www.bernina.com/midi-hoop>

Maxi Embroidery Hoop

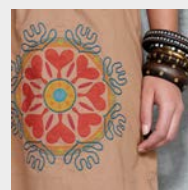


034 925 70 00 D2 Ea¹⁺²⁺⁴

This embroidery hoop is for especially large embroidery designs and combinations of motifs, as well as borders. A large rotating knob with a ratchet mechanism allows for easy hooping and unhooping of the material. The template allows accurate positioning of the motif on the item to be embroidered.

Embroidery area

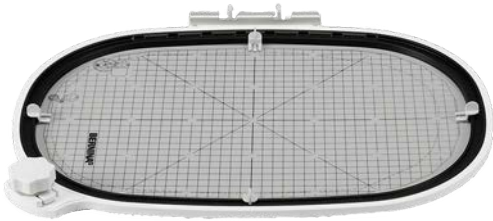
40 × 21 cm



<https://www.bernina.com/Maxi-Hoop>

Accessories for Embroidery Machines

Jumbo Embroidery Hoop



Ideal for especially large embroidery projects, this hoop excels at creating extra-large embroidery designs, combinations of motifs, and borders. A large rotating knob with a ratchet mechanism allows for easy hooping and unhooping of the material. The template allows accurate positioning of the motif on the item to be embroidered.

Embroidery area
40 × 26 cm

032 842 73 00 D2 Ea¹⁺²⁺⁴ F2



<https://www.bernina.com/Jumbo-Hoop>

"Hoop ,n' Buddyz" Hoop Insert



Used in conjunction with the large oval embroidery hoop, this hoop is ideal for embroidering caps and for working with slippery or difficult materials.

031 184 70 00 B4 C1,2,3[■] D2 Ea¹⁺²⁺⁴ Eb F2

■ C1: 185



<https://www.bernina.com/hoopbuddyz>

Frearm Embroidery Adapter for Medium and Oval Hoops



These adapters provide you with more space, making them ideal for embroidering tubular and closed sewing projects such as trouser legs, blouses, coat pockets and small t-shirts. They are designed for use with the small embroidery hoop/ medium and oval embroidery hoops, respectively.

033 648 70 00* B4 C1,2,3[■]

* While stocks last
■ C1: 185



<https://www.bernina.com/adapter-medium-oval-hoop>

Accessories for Embroidery Machines

BERNINA Embroidery Design Studio



Finding attractive embroidery motifs

The BERNINA Embroidery Design Studio is an online library that makes tens of thousands of professionally digitized motifs available to embroiderers. Simply enter a term or an embroidery technique in the web shop's search box and select, pay for and download your desired motif from the preview – it couldn't be easier!

Embroidering the motifs

The motifs are downloadable in all common data formats, and can be embroidered on almost any sewing and embroidery machine. The BERNINA Artlink software, which is available free of charge, allows you to view the motifs and change their formats if necessary.

www.embroideryonline.com/

BERNINA ArtLink software for free download

www.bernina.com/Artlink

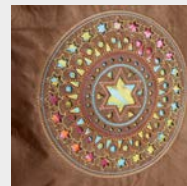


<https://www.bernina.com/artlink>

BERNINA CutWork Tool



034 276 72 00 B4 C2,3 D2 Ea¹⁺²⁺⁴ Eb F2 incl. #44C



<https://www.bernina.com/Designwork-Tools>

BERNINA CutWork Spare Parts

033 375 72 00 B4 C2,3 D2 Ea¹⁺²⁺⁴ Eb F2 CutWork Needles, 2 pcs.



<https://www.bernina.com/Cutwork-needles>

SOFTWARE



Software

BERNINA Embroidery Software 9



DESIGN YOUR DREAMS – CREATE YOUR IDEAS – CONNECT YOUR WORLD!

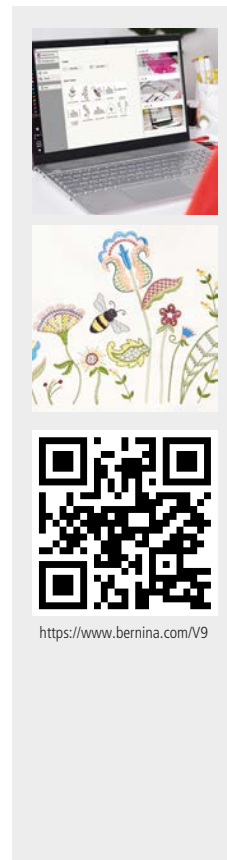
BERNINA Embroidery Software 9 the new software developed for long-time embroidery enthusiasts as well as for embroidery beginners. It opens the doors to outstanding and creative embroidery.

The DesignerPlus offers all the great, new and amazing embroidery features for creative minds who love to design unique motifs.

The Creator is the starter product to access the world of embroidery. The new digitalization tools such as welding and branching provide a quick way to make dreams come true. Additional fonts as well as the new keyboard embroidery motif collection offer unlimited possibilities to create designs with alphabets.

Not only new, but also awesome is the ability to transfer an embroidery motif from your computer to your embroidery machine via WiFi. With the DesignerPlus Software, the WiFi Device is included as part of the standard package.

Why not try it out? Download a free trial version of the BERNINA Embroidery Software 9 for 30 days at www.bernina.com/V9.



<https://www.bernina.com/V9>

105 716 50 00	B4	C	D2	Ea ¹⁺²⁺⁴	Eb	F2	DesignerPlus Full Version
105 716 50 01	B4	C	D2	Ea ¹⁺²⁺⁴	Eb	F2	Version update for versions 6, 7 and 8 (incl. BERNINA WiFi Device)
105 716 50 02	B4	C	D2	Ea ¹⁺²⁺⁴	Eb	F2	Upgrade for Creator V9 (incl. BERNINA WiFi Device)
105 716 50 03	B4	C	D2	Ea ¹⁺²⁺⁴	Eb	F2	Dealer Version (incl. BERNINA WiFi Device)
105 716 50 04	B4	C	D2	Ea ¹⁺²⁺⁴	Eb	F2	Creator Full Version
105 717 50 00	B4	C	D2	Ea ¹⁺²⁺⁴	Eb	F2	BERNINA WiFi Device

Software

BERNINA Toolbox



BERNINA Toolbox – The right tool for every embroidery project

Ideal for those first steps into the world of embroidery, the BERNINA Toolbox software will wow you with its simplicity and intuitive operation. It offers a wide range of embroidery motifs and lettering options.

The BERNINA Toolbox consists of individual modules that can be combined as wished, depending on your intended application. The software can be installed on computers running on either Mac or Windows operating systems.

You'll find the embroidery motif library in the BERNINA Cloud, the web service where embroidery motifs are displayed, saved and edited. The website www.berninacloud.com gives you access to the contents of the Toolbox via your PC, smartphone or tablet, letting you edit embroidery motifs any time, anywhere. To embroider the motifs, simply download them in the desired embroidery format.

In principle, the BERNINA Toolbox can be installed on any number of devices, although the software may be used simultaneously on no more than two. The software licenses are easy to activate and deactivate, allowing for flexible use.

A 30-day trial version is available for free download at www.bernina.com/toolbox-trial.



<https://www.bernina.com/toolbox-bundle>

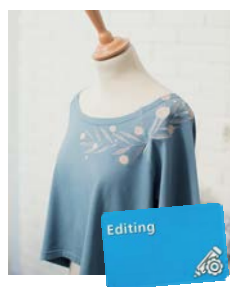
101 425 70 01	B4 [■]	C2,3 ^{□♦}	D2	Ea ¹⁺²⁺⁴	Eb	F2	Lettering Basic
101 425 70 00	B4 [■]	C2,3 ^{□♦}	D2	Ea ¹⁺²⁺⁴	Eb	F2	Editing
101 425 70 02	B4 [■]	C2,3 ^{□♦}	D2	Ea ¹⁺²⁺⁴	Eb	F2	Lettering
101 425 70 03	B4 [■]	C2,3 ^{□♦}	D2	Ea ¹⁺²⁺⁴	Eb	F2	Monogramming
101 425 70 04	B4 [■]	C2,3 ^{□♦}	D2	Ea ¹⁺²⁺⁴	Eb	F2	Bundle
101 425 70 05	B4 [■]	C2,3 ^{□♦}	D2	Ea ¹⁺²⁺⁴	Eb	F2	30-day trial version

■ B4: B 555, B 570, 630
 □ C2: 730
 ♦ C3: B 560, B 580, 640

Overview



Add and edit lettering



Edit embroidery designs



Modify and design lettering



Personalization



All-in-one!



Free 30-day trial version



ACCESSORIES FOR OVERLOCKERS/SERGERS



Machine Overview

Category A

009DCC
L 220



Category B

700D
800DL
870D
880DL



Category C

1100D
1100DA
1110D



Category D

1000DA
1200DA
1300C



Category E

1150MDA
1200MDA
1300MDC



Category F	1	L 450
	2	L 460

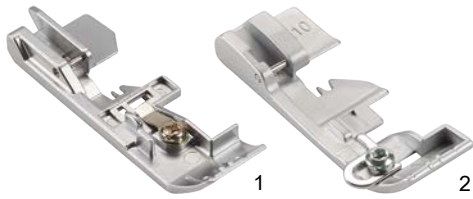


Category G	1	L 850 L 860
	2	L 890



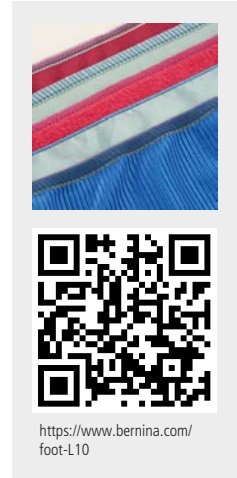
General sewing

Standard Foot Overlock



Suitable for most overlocking projects where the fabric edge is cut and neatened in a single operation. The presser foot is equipped with an adjustable tape guide.

502 010 72 05	B		
502 010 54 53	C		
502 070 03 97	F		1)
L10 103 611 70 00	G1		2)



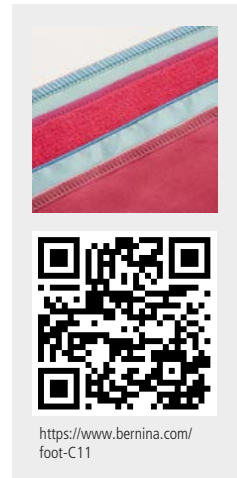
Overlock/Combostitch Foot



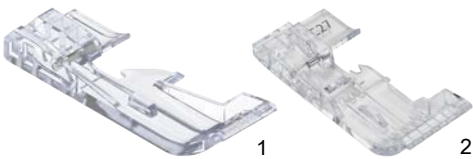
For general sewing projects with overlock and combo stitches. The markings on the presser foot are practical guiding aids.

502 010 70 20	D [■]	E [□]	
502 010 75 49	D [◆]	E [◊]	
C11 105 521 70 00			G2

■ D: 1300DC
 □ E: 1300MDC
 ◆ D: 1000DA, 1200DA
 ◊ E: 1150MDA, 1200MDA

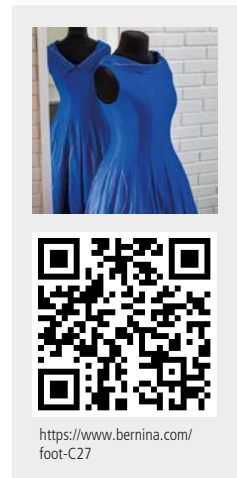


Clear Overlock/Combostitch Foot #L27/C27



The transparent standard presser foot is suitable for general sewing and provides a good view of the seam and fabric for more precise sewing, e.g. with corners and curves.

L27 104 042 70 00	G1		1)
C27 104 041 70 00	G2		2)



General sewing

Chainstitch Foot



502 010 52 41 A

The chainstitch foot improves fabric feed when chainstitching. It is perfect for seams on layers of fabric of the same height, or for sewing flat fabric.



<https://www.bernina.com/Chainstitch-foot>

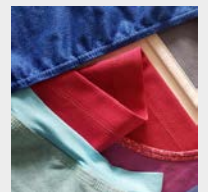
Cover-/Chainstitch Foot



C13 103 417 70 00

G2

The cover-/chainstitch foot improves fabric feeding for flat even seams and hems in knit and woven material. Its makes precise stitching easy, for example when sewing circles or tubes.

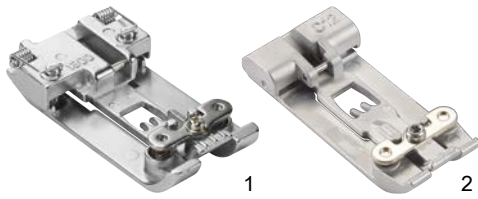


<https://www.bernina.com/foot-C13>



Hems and Topstitching

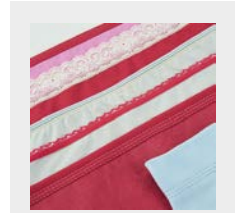
Coverstitch/Compensating Foot



For seams, hems, bindings and decorative sewing with cover or chainstitch along uneven layers of fabric. The spring-loaded sides of the foot guide the fabric when sewing binding, hems with elastic, or narrow topstitching.

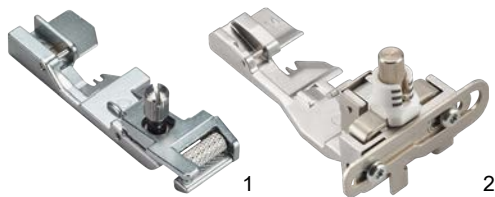
502 010 76 27	A [■]	1)
502 010 52 16	A [□]	1)
502 010 70 38	D [◆] E [◊]	1)
C12 103 609 70 00		G2 2)

■ A: L 220
 □ A: 009DCC
 ◆ D: 1300DC
 ◊ E: 1300MDC



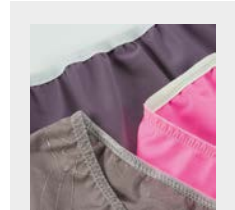
<https://www.bernina.com/foot-C12>

Elasticator Foot



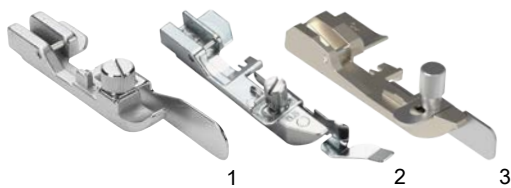
The elastic presser foot guides and stretches the elastic as it is being sewn on. Ideal for lingerie, swimwear, sportswear and home textiles.

502 010 64 59	B	C	D	E		
502 070 03 50					F	1)
L14 103 414 70 00						G1 2)
C14 103 610 70 00						G2



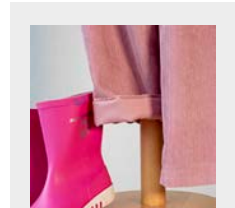
<https://www.bernina.com/foot-C14>

Blindstitch Foot



The adjustable guide plate on the side makes it easier to stitch blind hems. The blindstitch foot can also be used for flatlocking folded edges and for heirloom techniques.

502 010 64 58	B	C	D	E		1) universal
502 070 03 48					F	2) 0.5 mm
502 070 03 49					F	2) 10 mm
L19 103 785 70 00						G1 3) universal
C19 103 784 70 00						G2 universal



<https://www.bernina.com/foot-C19>

Hems and Topstitching

Double Fold Binder Attachment #C21



Due to the top bottom double fold binder attachment, fabric edges and necklines can be perfectly bordered with bias tape. The unfolded tape is inserted through the attached guide rail, folded over twice on the upper and lower sides of the bias tape and sewn on with a cover or chain stitch. For the perfect look, the bias tape can also be self-made. Tapes of 36 mm width result in a finished width of approx. 10 mm. An attachment adapter is required to use the binder Attachment.

C21	103 786 70 00	A	D [■]	E [□]	G2	1) 10/36 mm
	103 788 70 00	A		E	G2	2) Accessories Holder

■ D: 1300DC
□ E: 1300MDC



Single Fold Binder Attachment #C22



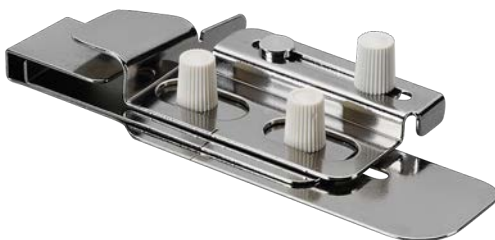
With the single fold binder attachment, fabric edges and necklines can be perfectly bordered with bias tape. The unfolded tape is inserted through the attached guide rail, folded over on the upper side while the under side remains open, and is then sewn on with a cover stitch. For the perfect look, the bias tape can also be self-made. Tapes of 40 mm width result in a finished width of approx. 10 mm. An attachment adapter is required to use the binder Attachment.

C22	103 787 70 00	A	D [■]	E [□]	G2	1) 10/40 mm
	103 788 70 00	A		E	G2	2) Accessories Holder

■ D: 1300DC
□ E: 1300MDC



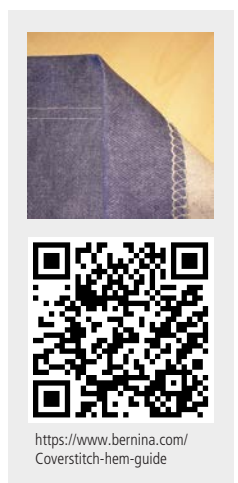
Hem Guide



The hem guide ensures even, parallel feeding of pre-folded fabric. Particularly suitable for hems on shirts and dresses made from stretch and highly elastic fabrics.

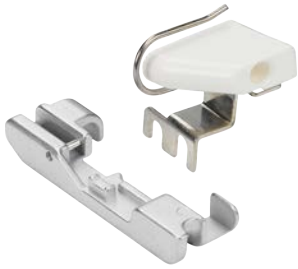
502 010 68 87*	A [■]	D [□]	E [◆]
502 010 77 22	A [○]		

* While stocks last
■ A: 009DCC
□ D: 1300DC
◆ E: 1300MDC
○ A: L 220



Decorative Sewing

Multi-purpose Foot with Guide



The guide groove guides the piping as it is being made and sewn in. The open guide channel facilitates the sewing-on of strings of beads and sequins.

502 010 64 61	B [■]	C	D		Foot with Guide
502 010 70 96				E	Foot with guide, with accessories holder only
502 010 64 62	B	C	D	E	Foot
502 070 03 51				F	Foot
502 010 07 72	B [■]	C	D		Guide
502 010 71 00				E	Guide

■ B: With Accessories Holder 502010.54.11only.



<https://www.bernina.com/multi-purpose-foot-L450-L460>

Beading and Sequin Foot #L15/C15



With the beading and sequin foot strings of beads and sequins up to a maximum diameter of 6 mm can be sewn on easily and quickly. It is used to create a beautiful finishing along fabric edges or decorations along flat seams. The groove on the bottom side of the foot and the guide on the side hold the strings of beads and sequins optimally so that they can be sewn without shifting. In combination with the right seam guide as guiding aid, the seams will be especially precise.

L15	103 419 70 00	G1
C15	103 418 70 00	G2



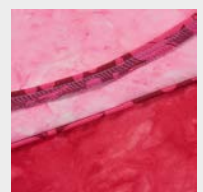
<https://www.bernina.com/foot-C15>

Piping Foot #L16 S/L16 L/C16 S/C16 L



The piping foot suits best to create and sew in piping. The markings on the presser foot are practical guiding aids. The feet #L16 S and #C16 S are used for light fabrics and for piping up to maximum of 3 mm. The Feet #L16 L and #C16 L are used for medium-weight and heavy fabrics as well as for piping up to a maximum of 3 – 5 mm.

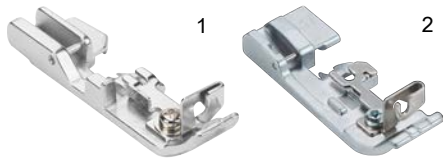
L16 S	103 422 70 00	G1
L16 L	103 423 70 00	G1
C16 S	103 420 70 00	G2
C16 L	103 421 70 00	G2



<https://www.bernina.com/foot-C16L>

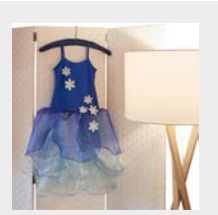
Decorative Sewing

Cording Foot



The cording foot is used e.g. for sewing thin cord, wire, fishing line, perle yarn or fine yarn into a rolled hem. Ideal for reinforced edges, decorative ruffles and shapeable knitted bands.

	502 010 64 60	B	C	D	E	1)
L17	103 425 70 00					G1 2)
C17	103 424 70 00					G2



<https://www.bernina.com/foot-C17>

Gathering Foot



With the gathering foot and the differential feed, one layer of the fabric is ruffled and immediately sewn to a fabric that remains flat. The fabric to be gathered is positioned underneath the gathering attachment, whilst the fabric that remains flat passes over it.

	502 010 68 82	B	C	D	E	1)
	502 070 03 52				F	2)
L18	103 427 70 00					G1 3)
C18	103 426 70 00					G2



<https://www.bernina.com/foot-C18>

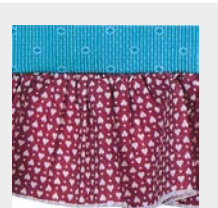
Gathering Attachment



The tab on the attachment separates the two layers of fabric. The bottom layer is gathered whilst the top layer remains flat. You can simply gather a length of fabric, or gather the fabric whilst simultaneously sewing it onto a flat piece of fabric.

	502 010 64 67	B [■]	C	D	
	502 010 70 95				E

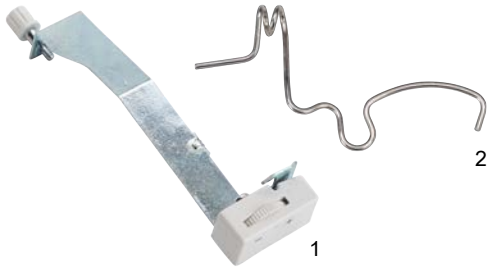
■ B: With Accessories Holder 502010.54.11 only.



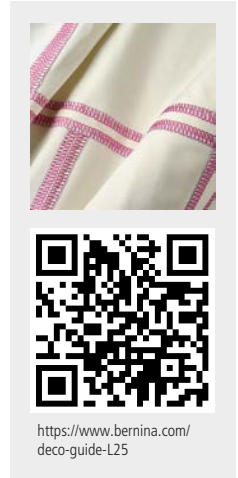
<https://www.bernina.com/Gathering-attachment>

Decorative Sewing

Decorative Threads Guide



This guide is ideal for sewing wide seams and hems with decorative threads. Because the pre-tension or thread tension unit is bypassed, little tension is applied to the decorative thread.



<https://www.bernina.com/deco-guide-L25>

502 070 03 55	F	1)
L25 103 789 70 00	G	2)

Decorative Thread Spool Pin



This horizontal spool pin holds parallel-wound flanged spools and conventional household spools of decorative and metallic thread. Lying on its side, the spool is unrolled rather than unwound, which prevents the threads from twisting.

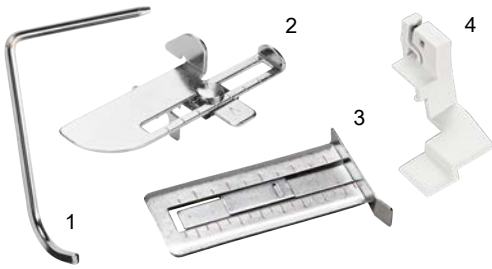


<https://www.bernina.com/decorative-thread-spool-L26>

502 070 03 56	F	1)
L26 103 790 70 00	G	2)

Other accessories

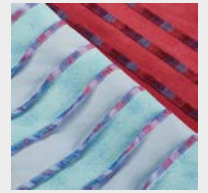
Right and Left Seam Guide



The right seam guide helps to guide the fabric and ensures that it is cut evenly. The left seam guide is ideal for sewing parallel lines of overlocking, coverstitching and chainstitching.

502 010 06 81	A	B	C	D	E	1) left
502 010 70 97					E	2) right
502 070 03 53					F	3) right
103 415 70 00					G	4) right

▪ B: With Accessories Holder 502010.54.11 only.



<https://www.bernina.com/Right-seam-guides-L850-890>

Slide-on Table



The slide-on table increases the sewing area to the left of the needle. It allows large fabrics to be guided more easily and gives a better overview of the sewing project.

502 070 03 57	F
----------------------	---



<https://www.bernina.com/Slide-on-table-L450-460>

Freearm Cover



The freearm cover is used to cover the opening of the freearm to get a consistent working surface in the sewing area. At the same time, the stitch plate remains easily accessible.

104 547 70 00	G
----------------------	---



<https://www.bernina.com/freearm-cover-L850-890>

Other accessories

Cut-offs Bin



The cut-offs bin keeps the sewing table tidy. Simply click it on to the looper cover and dispose of fabric waste immediately after cutting. It can also be used to store the foot control.



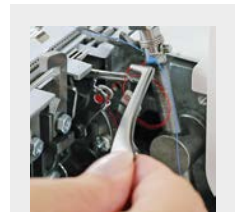
<https://www.bernina.com/cut-offs-bin>

502 010 66 88	B							1)
502 010 65 79		C	D	E				2)
502 070 03 58					F			2)
034 657 50 00						G		3)

BERNINA Tweezers



BERNINA tweezers allow you to thread your overlocker with ease and remove any remaining pieces of thread from the machine.

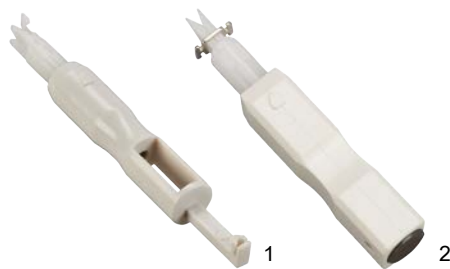


<https://www.bernina.com/tweezers>

031 564 52 00	A	B	C [■]	D [■]	E [■]	F	G	
---------------	---	---	----------------	----------------	----------------	---	---	--

■ Does not fit in the accessories holder in the looper cover.

Needle Threader/Inserter



The needle threader/inserter makes it easy to hold, insert and thread overlocker needles.



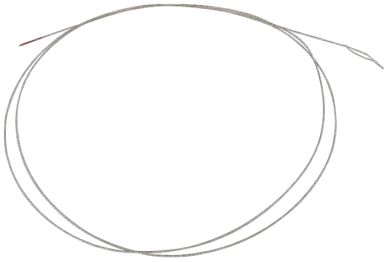
<https://www.bernina.com/needle-threader-inserter>

502 070 03 69	A	B	C	D	E [■]	F	G	1)
502 010 70 44					E			2)

■ Does not fit in the accessories holder in the looper cover.

Other accessories

Threading Wire



The wire is used temporarily if one of the air threader tubes should be blocked. This way, the problem can be temporarily overcome so that the project can be completed.

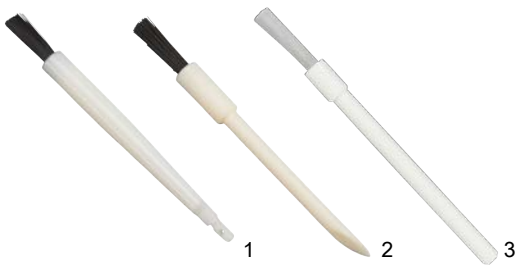


<https://www.bernina.com/threading-wire>

104 067 70 00

G

Brush/Needle Inserter



This tool helps you remove dust and lint from the looper and stitch-plate area. One of the two variants also holds the needle in place during insertion.



<https://www.bernina.com/brush-needle-inserter>

502 010 72 47	A	B	C	D	E		1) with Needle Inserter
502 070 03 63						F	2)
330 02203103						G	3)

Screwdriver



The screwdriver makes changing needles simplicity itself.



<https://www.bernina.com/screwdriver>

502 010 76 46	A [■]						1) 1.5 mm hex
502 010 06 80	A [□]	B	C	D	E		2) slot
035 987 50 00						F G	3) 1.5 mm hex

■ A: L 220
□ A: 009DCC

Other accessories

Spool Stabilizer/Spool Stabilizer



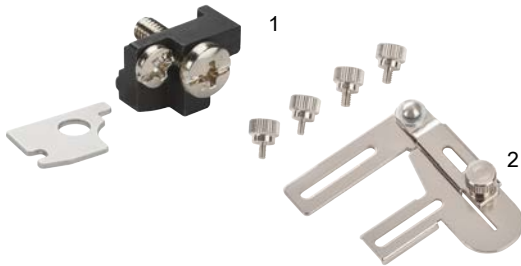
The spool stabilizer prevents spools and cones of various sizes from vibrating at both slow and fast sewing speeds.



<https://www.bernina.com/spool-stabilizer-L450-460>

502 010 08 75	A	B	C	D	E	1)
502 070 03 60	F					2)
008 986 50 30	G					3)

Accessories Holder



The accessory holder is required to attach overlock accessories such as the seam guide or the gathering guide.



<https://www.bernina.com/Accessory-holder>

502 010 54 11	A	B	C			1)
103 788 70 00	A	E [■]			G2	2) Accessories Holder

■ E: 1300MDC

CS-Lock Tool



With the CS-Lock Tool, the needle threads can be pulled between foot and stitch plate easily. This eases cutting and locking the cover- and chainstitch. The scale serves as tool to measure hems, seams or mark fabrics. In addition the scale can be used to adjust the seam guide.



<https://www.bernina.com/coverstitch-lock-tool>

104 050 70 00						G
---------------	--	--	--	--	--	---

Other accessories

Threading Kit Overlocker



103 377 70 00

G

The thread kit facilitates threading and adjusting the appropriate thread tension. The threads can be threaded according to the color-coded threading paths. The corresponding colors make it easy to recognize which thread tension can be fine tuned. The stitch formation can be checked and adjusted accordingly. The kit includes five differently colored threads.



<https://www.bernina.com/threading-kit-overlocker>

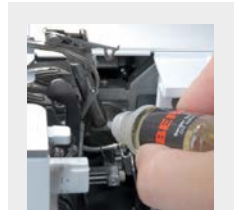
Overlocker Oil



033 567 71 02

G

Regular care ensures the flawless operation of the overlocker. Lubricating with this convenient oil pen is an important part of it.



<https://www.bernina.com/overlocker-oil>

Touchscreen Pen



033 333 71 00

G2

For easy operation of the touchscreen on overlocker. The pen is magnetic and can be attached to the right side of the machine. Using the touchscreen pen helps keep the screen clean.



<https://www.bernina.com/touchscreen-pen-L890>

Other accessories

Accessories Box



502 070 05 15 A B C D E F G

The accessories box can be used to store overlocker presser feet and other accessories.
Please note: The accessories box is delivered without content.



<https://www.bernina.com/accessories-box-Overlocker>

Accessories Box/Accessories Box Extension



The large accessories box and the corresponding extension box provide a lot of storage space for presser feet and further accessories. The knobs on the bottom of the boxes ensure a solid stability on the machine and prevent the boxes from shifting during transportation. The removable lid serves as a temporary tray for additional small parts used while sewing. The accessories box is delivered without content.



<https://www.bernina.com/accessories-box-with-extension>

Accessories Box/Extension Box

104 290 70 00	A	B	C	D	E	F	G	1)
104 291 70 00	A	B	C	D	E	F	G	2)

Carrying Case for Overlockers/Sergers



502 010 72 00 A B C D E F

Keep your overlocker in tip-top condition when traveling, and protect it when not in use.



<https://www.bernina.com/carrying-case-overlocker>

Other accessories

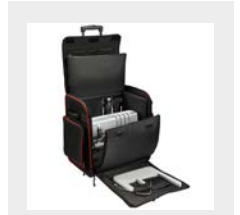
Trolley for Overlockers



103 670 70 00

G

The practical trolley is very sturdy and perfectly suited when you are en route. The inner and outer pockets provide a lot of space for accessories. Due to the robust castors and the retractable telescope handle, the machine can be pulled comfortably. The sideways handles allow a convenient dealing when loading and unloading.



<https://www.bernina.com/overlocker-trolley>

BERNINA E 16 multi-needle embroidery machine

Professional Embroidery

The perfect partner for home, studio or business

With 16 needles, speeds of up to 1,400 stitches per minute (spm), automatic tension settings, and a narrow cylindrical arm, the BERNINA E16 will complete the task like a pro, whether embroidering a jacket back or small pocket. Personalize team uniforms and caps, monogram stylish totes, commemorate a special occasion, use the Chenille technique for a special 3-D effect, or complete an elaborate embroidered quilt—the results will be everything you ever dreamed of.



More information on www.bernina.com/multineedle
Not all products and models are available in all countries.

Professional Quilting

Introducing *BIG*

The BERNINA Longarm machines embody the dream of creating a machine simple enough for a beginner to master, yet robust enough for the professional.

Dream *BIG*

BERNINA is excited to share with you the fulfilment of a vision that was 120 years in the making. A long history of innovation and a wealth of quilting expertise have been combined in a machine that will meet the demands of discerning quilters everywhere. From the very first stitch, you will appreciate the thought behind every detail.

Confidently finish your large quilt projects, explore art-quilting, or enter a quilt competition. BERNINA is the perfect partner for home or studio.

More information at www.bernina.com/longarm
Not all products and models are available in all countries.





0338795.80A.04



033879.58.04

BERNINA

Mettler[®]